

| R (max) m | H1 m | R (min) m | H2 m | Rfs m |
|--------------|---------|--------------|---------|----------|
| 65 | 23,9 | 5,7 | 68 | 30 |
| 60 | 22,6 | 5,3 | 63 | 27 |
| 55 | 21,3 | 5,5 | 58 | 25 |
| 50 | 20,0 | 4,9 | 53 | 23 |
| 45 | 18,7 | 4,7 | 48 | 21 |
| 40 | 17,3 | 3,9 | 43 | 19 |
| 35 | 16,0 | 4,3 | 38 | 19 |
| 30 | 14,6 | 3,1 | 33 | 19 |

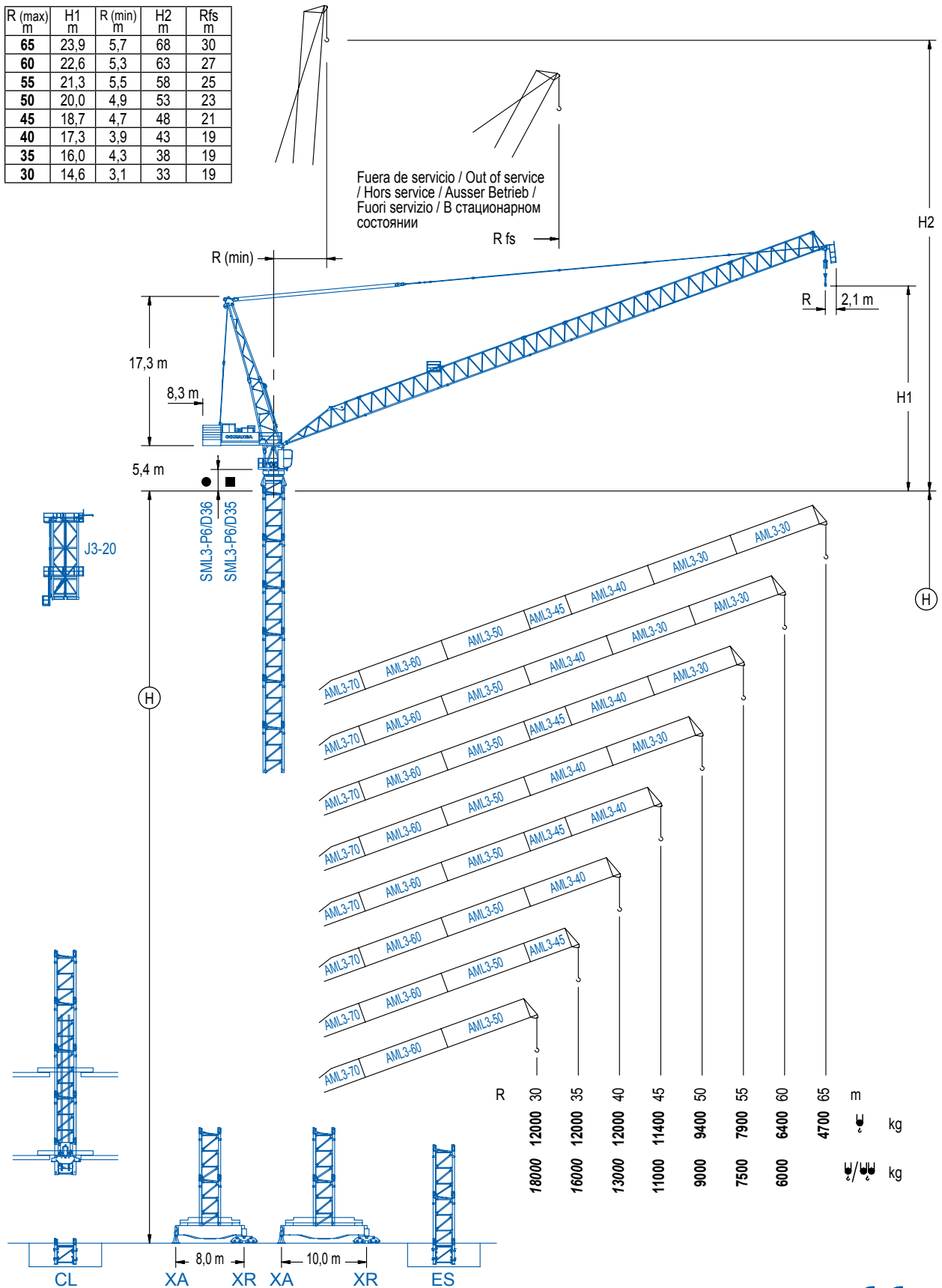
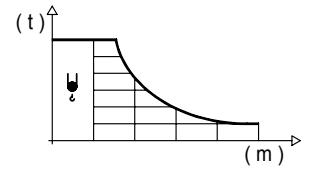


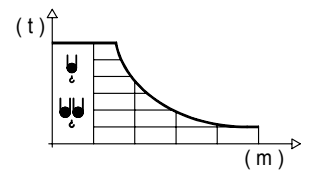
DIAGRAMA DE CARGAS

Load chart / Diagramme de charges / Lastdiagramm / Diagramma di carico / Диаграмма распределения нагрузки

| R (m) | ψ | RCmax (m) | 15 | 20 | 25 | 30 | 35 | 40 | 45 | 50 | 55 | 60 | 65 | ↔(m) ↓(kg) |
|----------|---|--------------|----|----|-------|-------|-------|-------|-------|------|------|------|------|---------------|
| 65 | | 28,0 | | | 12000 | 11160 | 9440 | 8150 | 7150 | 6350 | 5700 | 5150 | 4700 | |
| 60 | | 33,5 | | | | 12000 | 11290 | 9820 | 8680 | 7760 | 7010 | 6400 | | |
| 55 | | 38,0 | | | | | 12000 | 11330 | 9930 | 8810 | 7900 | | | |
| 50 | | 40,5 | | | | | | 12000 | 10810 | 9400 | | | | |
| 45 | | 43,0 | | | | | | 12000 | 11400 | | | | | |
| 40 | | 40,0 | | | | | | 12000 | | | | | | |
| 35 | | 35,0 | | | | | 12000 | | | | | | | |
| 30 | | 30,0 | | | | 12000 | | | | | | | | |

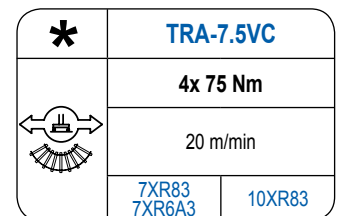
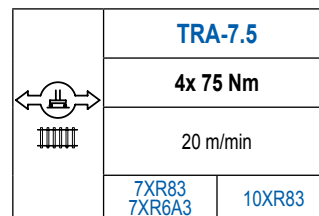
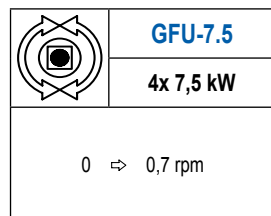
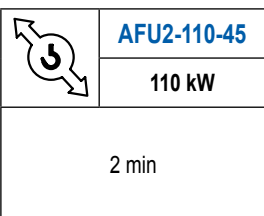
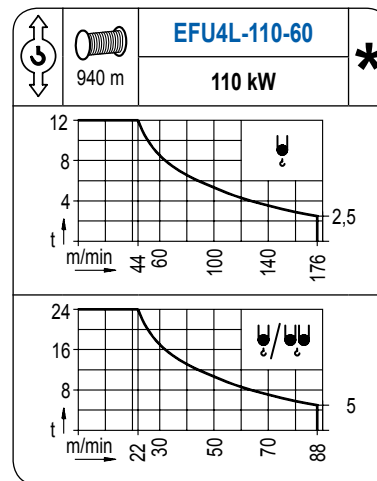
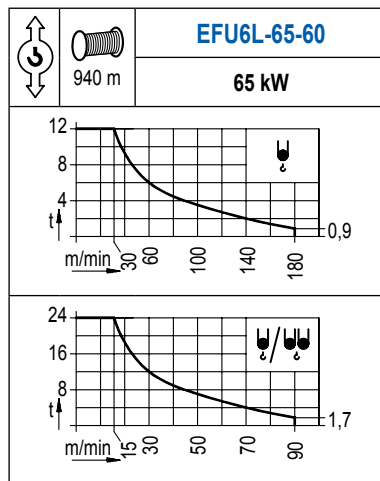


| R (m) | ψ/ψψ | RCmax (m) | 15 | 20 | 25 | 30 | 35 | 40 | 45 | 50 | 55 | 60 | 65 | ↔(m) ↓(kg) |
|----------|------|--------------|-------|-------|-------|-------|-------|-------|-------|------|------|------|----|---------------|
| 60 | | 16,5 | 24000 | 19620 | 15510 | 12780 | 10830 | 9380 | 8240 | 7340 | 6610 | 6000 | | |
| 55 | | 20,0 | | 24000 | 18560 | 15080 | 12650 | 10860 | 9480 | 8390 | 7500 | | | |
| 50 | | 22,0 | | 24000 | 20570 | 16560 | 13800 | 11780 | 10230 | 9000 | | | | |
| 45 | | 21,0 | | 24000 | 20390 | 16840 | 14320 | 12440 | 11000 | | | | | |
| 40 | | 23,0 | | 24000 | 21880 | 17890 | 15080 | 13000 | | | | | | |
| 35 | | 24,0 | | 24000 | 23770 | 19200 | 16000 | | | | | | | |
| 30 | | 23,0 | | 24000 | 22320 | 18000 | | | | | | | | |



MECANISMOS

Mechanisms / Mécanismes / Antriebe / Meccanismi / Механизмы



| POTENCIA / POWER / PUISSANCE / LEISTUNG / POTENZA / МОЩНОСТЬ | | | | Tensión de alimentación / Operating voltage / Tension de service / Betriebsspannung / Tensione di alimentazione / Напряжение источника питания | | Generador / Generator / Générateur / Generator / Generatore / Генератор | |
|--|--|--|---|--|-----|---|--|
| Elevación / Hoist / Levage / Hub / Sollevamento / Тип механизма (подъем) | Abatimiento / Luffing / Releage / Einziehen / Brandeggio / Складывание | Giro / Slewing / Rotation / Drehbewegung / Rotazione / Поворот | Traslación / Travel / Translation / Verfahrbewegung / Traslazione / Ход | 400 V | 3ph | 365 kVA | |
| EFU6L-65-60 | AFU2-110-45 | (4x) GFU-7.5 | (4x) TRA-7.5 | 50 Hz | | 430 kVA | |
| EFU4L-110-60 | | | | | | | |

Opcional / Optional / En option / Kaufoption / Opzionale / Опционально

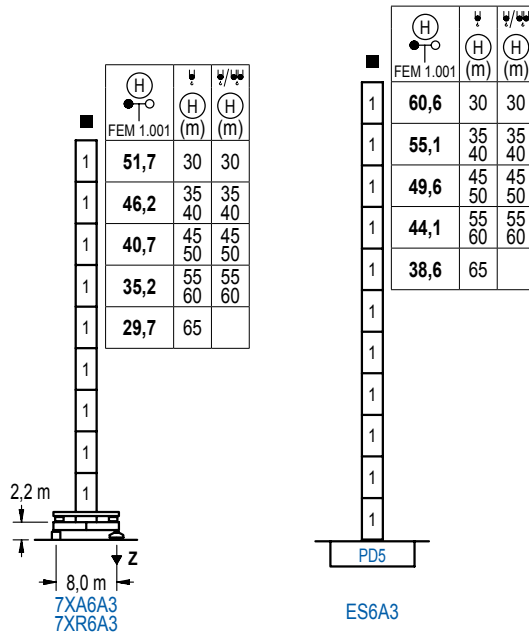
*

ALTURAS DE TORRE

Tower height / Hauteurs de tour / Turmhöhen / Altezza della torre / Высота башни

∅ 2,5 m

FEM 1.001



| n° | Ref. | ∅ | h |
|----|------|-----|-----|
| 1 | D35 | 2,5 | 5,5 |

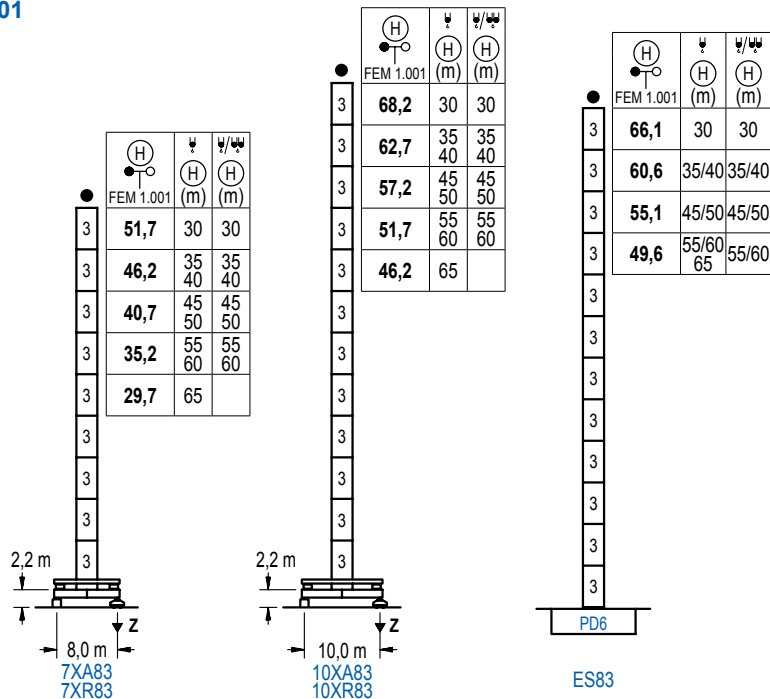
| Z máx. | En servicio / In operation / En service / In Betrieb / In servizio / При работе | 7XR6A3 ... 159 t |
|--------|--|------------------|
| | Fuera de servicio / Out of service / Hors service / Ausser Betrieb / Fuori servizio / В стационарном состоянии | 7XR6A3 ... 186 t |

ALTURAS DE TORRE

Tower height / Hauteurs de tour / Turmhöhen / Altezza della torre / Высота башни

∅ 2,5 m

FEM 1.001



| n° | Ref. | ∅ | h |
|----|------|-----|-----|
| 3 | D36B | 2,5 | 5,5 |

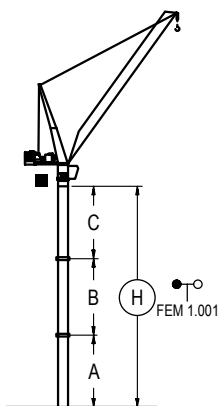
| Z máx. | En servicio / In operation / En service / In Betrieb / In servizio / При работе | 7XR83..... 154 t 10XR83..... 171 t |
|--------|--|---------------------------------------|
| | Fuera de servicio / Out of service / Hors service / Ausser Betrieb / Fuori servizio / В стационарном состоянии | 7XR83..... 188 t 10XR83..... 249 t |

GRÚA ARRIOSTRADA

Braced crane / Grue à entretoisement / Abgespannter Kran / Gru ancorata / Нарастиваемый кран

∅ 2,5 m

FEM 1.001



| | | 7XA6A3 | | | | |
|-------|---------|--------|---------|---------|---------|-------|
| R (m) | ψ/ψ (m) | 65 | 60 / 55 | 50 / 45 | 40 / 35 | 30 |
| A max | A min | - | 24,2 | 29,7 | 35,2 | 40,7 |
| B max | B min | - | 22,0 | 22,0 | 27,5 | 33,0 |
| C max | | - | 33,0 | 33,0 | 38,5 | 44,0 |
| H max | | - | 57,2 | 73,7 | 84,7 | 101,2 |

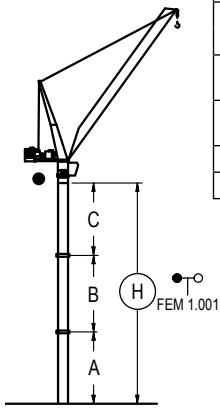
| | | ES6A3 | | | | |
|-------|---------|-------|---------|---------|---------|-------|
| R (m) | ψ/ψ (m) | 65 | 60 / 55 | 50 / 45 | 40 / 35 | 30 |
| A max | A min | 27,6 | 33,1 | 38,6 | 44,1 | 49,6 |
| B max | B min | - | 16,5 | 22,0 | 27,5 | 33,0 |
| C max | | 27,5 | 27,5 | 33,0 | 38,5 | 44,0 |
| H max | | 55,1 | 71,6 | 82,6 | 93,6 | 101,2 |

GRÚA ARRIOSTRADA

Braced crane / Grue à entretoisement / Abgespannter Kran / Gru ancorata / Нарациваемый кран

∅ 2,5 m

FEM 1.001



| | | 7XA83 | | | | |
|---------------------|------|---------|---------|---------|-------|--|
| R | 65 | 60 / 55 | 50 / 45 | 40 / 35 | 30 | |
| (m) $\Psi/\Psi\Psi$ | - | 60 / 55 | 50 / 45 | 40 / 35 | 30 | |
| A max | 18,7 | 24,2 | 29,7 | 35,2 | 40,7 | |
| A min | 18,7 | 18,7 | 24,2 | 29,7 | 29,7 | |
| B max | 16,5 | 22,0 | 27,5 | 33,0 | 38,5 | |
| B min | 16,5 | 16,5 | 22,0 | 22,0 | 22,0 | |
| C max | 27,5 | 33,0 | 38,5 | 44,0 | 49,5 | |
| C min | 27,5 | 33,0 | 38,5 | 44,0 | 49,5 | |
| H max | 46,2 | 62,7 | 79,2 | 95,7 | 128,7 | |

| | | 10XA83 | | | | |
|---------------------|------|---------|---------|---------|-------|--|
| R | 65 | 60 / 55 | 50 / 45 | 40 / 35 | 30 | |
| (m) $\Psi/\Psi\Psi$ | - | 60 / 55 | 50 / 45 | 40 / 35 | 30 | |
| A max | 35,2 | 40,7 | 46,2 | 51,7 | 57,2 | |
| A min | 29,7 | 29,7 | 24,2 | 29,7 | 29,7 | |
| B max | 22,0 | 22,0 | 27,5 | 33,0 | 38,5 | |
| B min | 22,0 | 22,0 | 22,0 | 22,0 | 22,0 | |
| C max | 33,0 | 33,0 | 38,5 | 44,0 | 49,5 | |
| C min | 33,0 | 33,0 | 38,5 | 44,0 | 49,5 | |
| H max | 68,2 | 90,2 | 112,2 | 134,2 | 166,2 | |

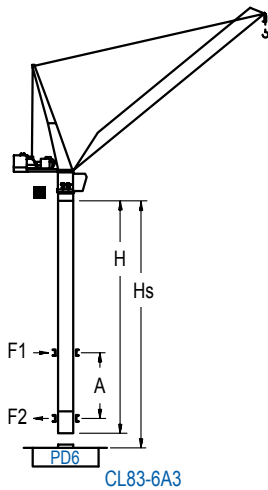
| | | ES83 | | | |
|---------------------|--------------|---------|---------|-------|--|
| R | 65 / 60 / 55 | 50 / 45 | 40 / 35 | 30 | |
| (m) $\Psi/\Psi\Psi$ | 60 / 55 | 50 / 45 | 40 / 35 | 30 | |
| A max | 38,6 | 44,1 | 49,6 | 55,1 | |
| A min | 27,6 | 22,1 | 27,6 | 27,6 | |
| B max | 22,0 | 27,5 | 33,0 | 38,5 | |
| B min | 22,0 | 22,0 | 22,0 | 22,0 | |
| C max | 33,0 | 38,5 | 44,0 | 49,5 | |
| C min | 33,0 | 38,5 | 44,0 | 49,5 | |
| H max | 71,6 | 93,6 | 115,6 | 143,1 | |

GRÚA TREPADORA

Internal climbing crane / Grue avec cage de télescopage intérieure / Kran mit klettern im Gebäude / Gru in rampante in cavedio / Кран с самоподъемом

∅ 2,5 m

FEM 1.001



| H FEM 1.001 | Ψ (R)(m) | $\Psi/\Psi\Psi$ (R)(m) | Hs < 300 m | |
|---|------------------|---------------------------|--------------|--------------|
| | | | A max (m) | A min (m) |
| 64,3 (6x D35 + TD36B + 4x D36A + CLD36A-28) | 30 | 30 | 24,6 | 14,0 |
| | 35 | 35 | | |
| | 40 | 40 | | |
| 58,8 (5x D35 + TD36B + 4x D36A + CLD36A-28) | 45 | 45 | 21,9 | 14,0 |
| | 50 | 50 | | |
| 53,3 (4x D35 + TD36B + 4x D36A + CLD36A-28) | 55 | 55 | 19,1 | 14,0 |
| | 60 | 60 | | |
| 47,8 (3x D35 + TD36B + 4x D36A + CLD36A-28) | 65 | 60 | 16,4 | 15,0 |
| | | | | |

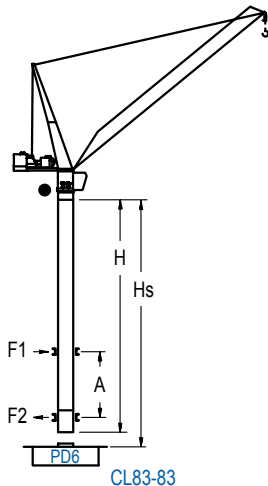
| n° | Ref. | ∅ | h |
|----|-----------|-----|-----|
| 1 | D35 | 2,5 | 5,5 |
| 2 | TD36B | 2,5 | 5,5 |
| 4 | D36A | 2,5 | 5,5 |
| 5 | CLD36A-28 | 2,5 | 3,8 |

GRÚA TREPADORA

Internal climbing crane / Grue avec cage de télescopage intérieure / Kran mit klettern im Gebäude / Gru in rampante in cavedio / Кран с самоподъемом

∅ 2,5 m

FEM 1.001



| H FEM 1.001 | Ψ (R)(m) | $\Psi/\Psi\Psi$ (R)(m) | Hs < 300 m | |
|--|------------------|---------------------------|--------------|--------------|
| | | | A max (m) | A min (m) |
| 64,3 (7x D36B + 4x D36A + CLD36A-28) | 30 | 30 | 24,6 | 14,0 |
| | 35 | 35 | | |
| | 40 | 40 | | |
| 58,8 (6x D36B + 4x D36A + CLD36A-28) | 45 | 45 | 21,9 | 14,0 |
| | 50 | 50 | | |
| 53,3 (5x D36B + 4x D36A + CLD36A-28) | 55 | 55 | 19,1 | 15,0 |
| | 60 | 60 | | |
| | 65 | 60 | | |

| n° | Ref. | ∅ | h |
|----|-----------|-----|-----|
| 3 | D36B | 2,5 | 5,5 |
| 4 | D36A | 2,5 | 5,5 |
| 5 | CLD36A-28 | 2,5 | 3,8 |

Otras zonas de viento, alturas superiores, arriostamientos o trepado interno consultar / Other wind zones, additional hook heights, tie frames or internal climbing on request / Autres zones de vent, des hauteurs supplémentaires, entretoisements ou grues avec cage de télescopage intérieure, sur demande / Andere Windzonen, weitere Hakenhöhen, Abspannungen zum Gebäude oder Klettern im Gebäude auf Anfrage / Per zone con velocità del vento particolari, altezze superiori, ancoraggi o rampante in cavedio, consultare il fabbricante / При других ветренных зонах, при большой высоте, привязках к зданию или наращивании крана внутри здания проконсультируйтесь с нами