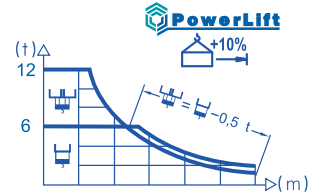
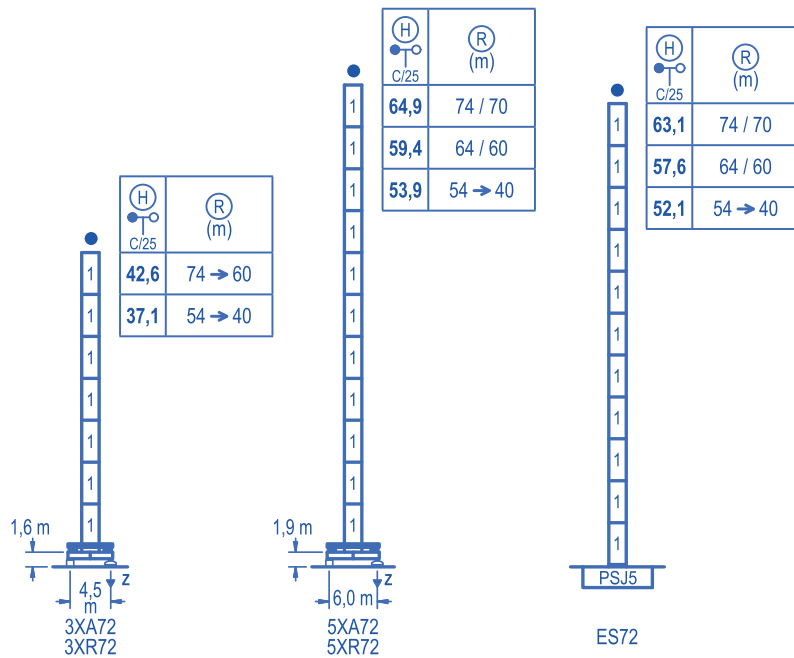


R																	
74	20.2 12000	23 10320	25 9350	28 8160	30 7500	33 6670	35,9 6000	37,3 6000	40 5550	44 4980	50 4300	54 3930	60 3480	64 3220	70 2890	74,0 2700	m kg
70	20.7 12000	23 10610	25 9610	28 8390	30 7720	33 6870	36,8 6000	38,5 6000	40 5740	44 5160	50 4460	54 4080	60 3600	64 3340	70,0 3000	m kg	
64		23.7 12000	25 11250	28 9850	30 9080	33 8100	35 7540	38 6820	42,1 6000	44,8 6000	50 4300	54 4860	60 4310	64,0 4000	m kg		
60			24.4 12000	28 10210	30 9410	33 8400	35 7830	38 7080	43,5 6000	46,5 6000	50,00 6000	54 5530	60,0 5070	64,0 4500	m kg		
54				27,1 12000	30 10660	33 9530	35 8890	38 8060	40 7580	48,4 6000	52,4 6000	54,0 5800	m kg				
50					28,0 11990	30 11070	33 9910	35 9240	38 8380	40 7890	44 7030	49,4 6100	m kg				
44						28,1 12000	30 11140	33 9970	35 9300	38 8440	40 7940	43,4 7200	m kg				
40							28,7 12000	30 11410	33 10220	35 9540	38 8650	39,4 8300	m kg				



With the **PowerLift** system, intermediate loads are increased by 10%, please consult user guide.  
用超力矩系统，起重力矩增加10%，请参照用户手册。

Heights under hook  
吊钩高度  $\varnothing$  2,0 m



N°	Ref.	$\varnothing$	h
1	SJ25	2,0	5,5
1xSJ25 = 1xSJ25M			

R. max. 最大反力	In operation 工作状态	3XR72.....100 t 5XR72.....103 t
	Out of service 非工作状态	3XR72.....76 t 5XR72.....134 t

Other wind zones or additional hook heights on request  
其他风区或另外的吊钩高度请咨询

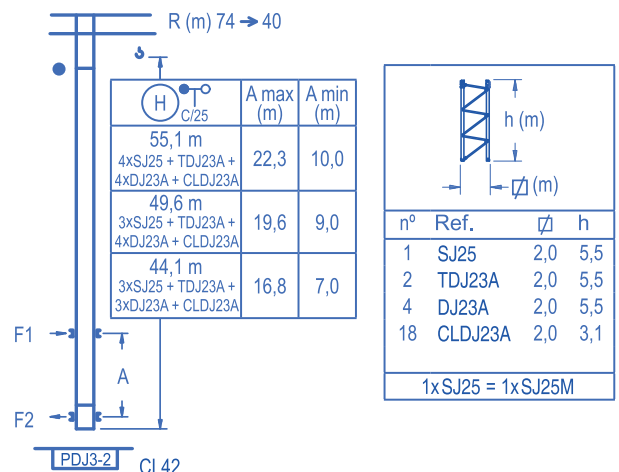
Braced crane  
塔机附着

R (m)	3XA72				5XA72			
	74 → 60	54 → 40	74 / 70	64 / 60	54 → 40	74 / 70	64 / 60	54 → 40
A max	29,1	23,6	51,4	45,9	40,4			
A min	23,6	23,6	23,6	23,6	23,6			
B max	-	33,0	-	33,0	-	33,0	-	33,0
B min	-	16,5	-	16,5	-	16,5	-	16,5
C max	52,0	46,5	46,5	46,5	46,5	46,5	46,5	46,5
H max	81,1	108,6	70,1	103,1	97,9	130,9	92,4	125,4

R (m)	ES72		
	74 / 70	64 / 60	54 → 40
A max	49,6	44,1	38,6
A min	22,1	22,1	22,1
B max	-	33,0	-
B min	-	16,5	-
C max	46,5	46,5	46,5
H max	96,1	129,1	90,6

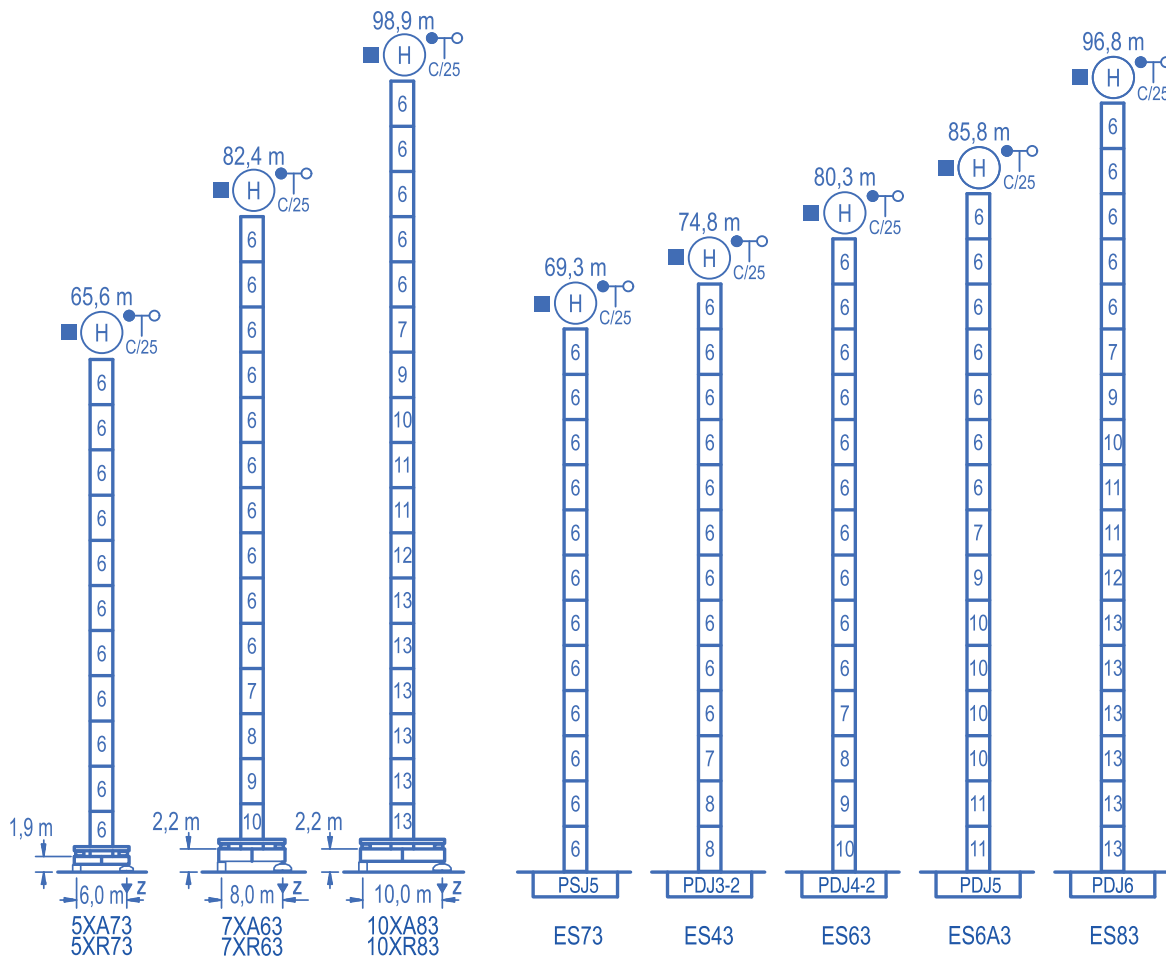
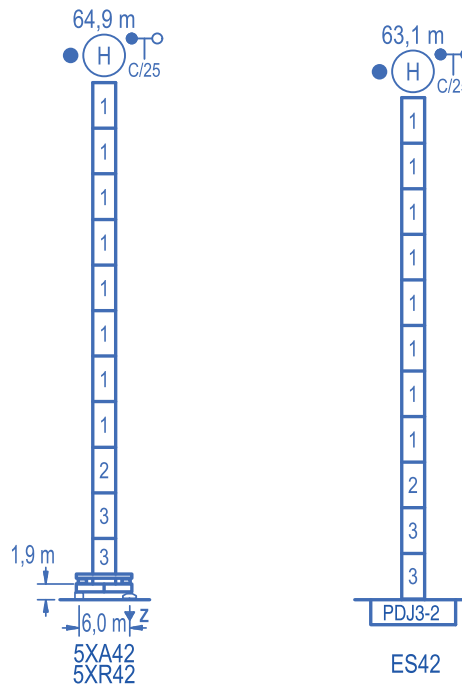
Internal climbing crane  
内爬塔机



Other wind zones or additional hook heights on request  
其他风区或另外的吊钩高度请咨询

Climbing inside building on request  
使用内爬结构请咨询

CM-DS-201508-017





	n°	Ref.	Ø	h	n°	Ref.	Ø	h	n°	Ref.	Ø	h	n°	Ref.	Ø	h
		1	SJ25	2,0	5,5	6	SJ35	2,5	5,5	9	TDJ34	2,5	5,5	12	TD36B	2,5
	2	TDJ23A	2,0	5,5	7	TDJ33A	2,5	5,5	10	SJ34	2,5	5,5	13	D36	2,5	5,5
	3	DJ23	2,0	5,5	8	DJ33	2,5	5,5	11	DJ35	2,5	5,5				
	1xSJ25 = 1xSJ25M															


Other wind zones or additional hook heights on request  
其他风区或另外的吊钩高度请咨询


CM-DS-201508-017

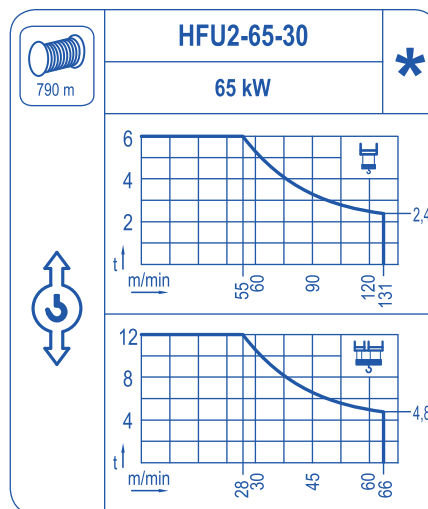
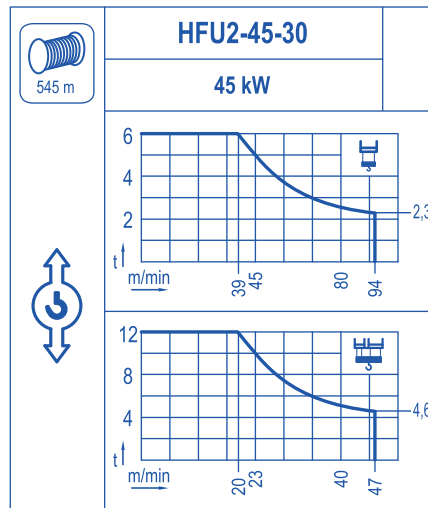
Subject to modifications.

	<b>TFU-7.5</b>
	7,5 kW
0 ⇄ 94 m/min	

	<b>SWR-12</b>
	3x 120 Nm
0 ⇄ 0,7 rpm	

	<b>RT-7.5</b>	
	2x 75 Nm	
	0 ⇄ 20 m/min	
	3XR72	5XR72

	<b>RT-7.5VC</b> *	
	2x 75 Nm	
	0 ⇄ 20 m/min	
	5XR72	



POWER / 功率				Operating voltage / 工作电压	Generator / 发电机
Hoist / 起升机构	Trolley / 变幅机构	Slewing / 回转机构	Travel / 行走机构		
HFU2-45-30	TFU-7.5	(3x) SWR-12	(2x) RT-7.5	380 V 3ph 50 Hz	160 KVA
HFU2-65-30					200 KVA

Optional 选项
*