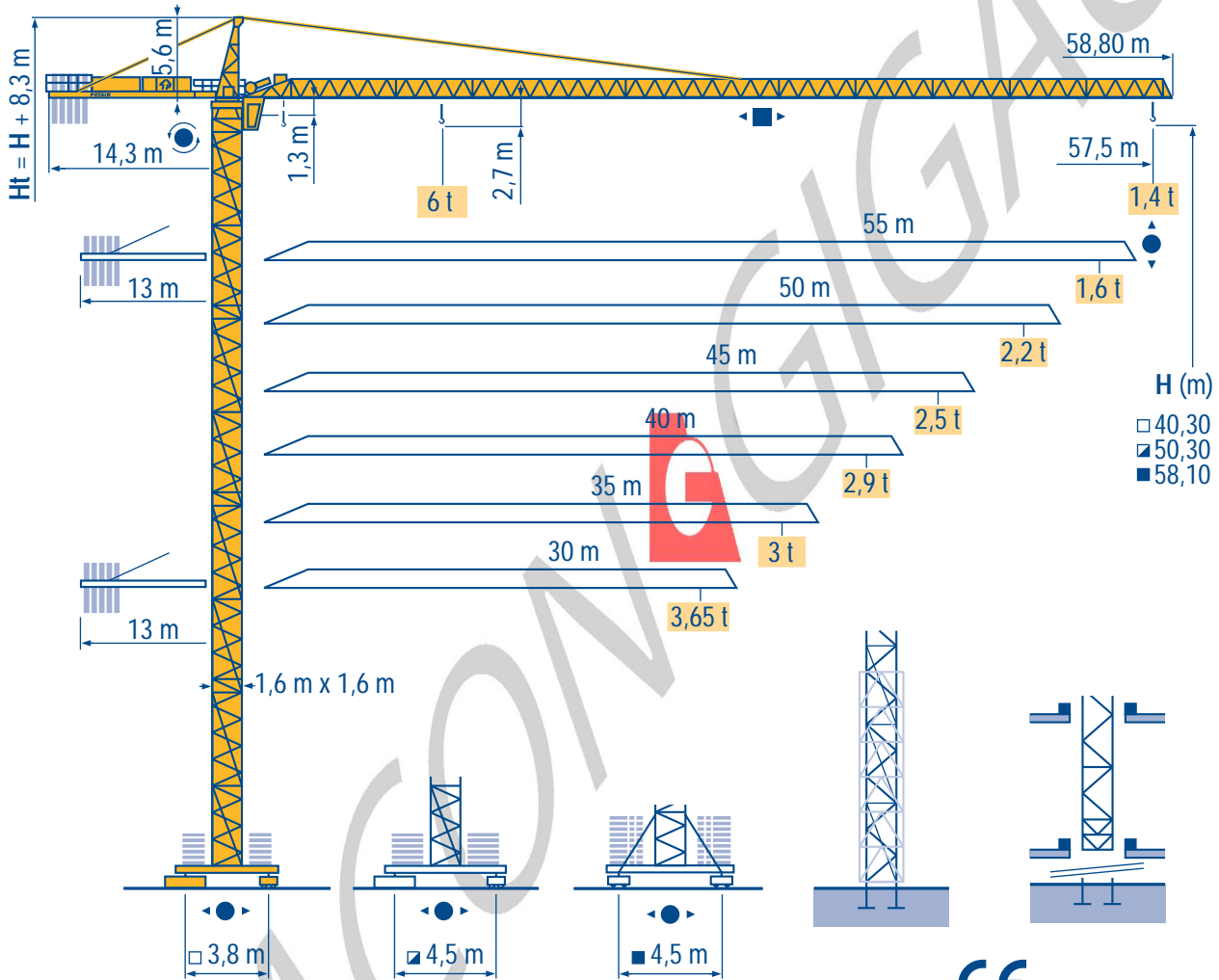


CITY CRANE MD 125 A



HD



HDT



GTMR



CITY CRANE



TOPKIT MD



MR



MAXI MD



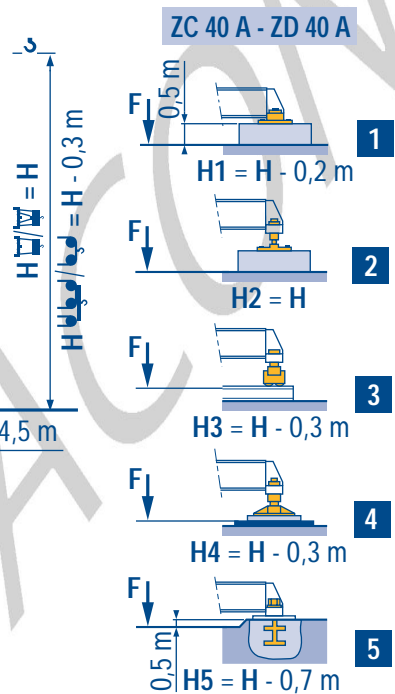
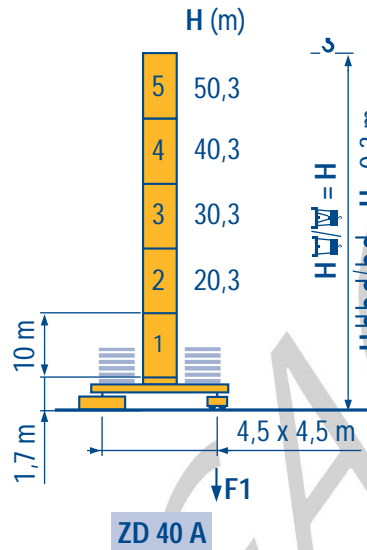
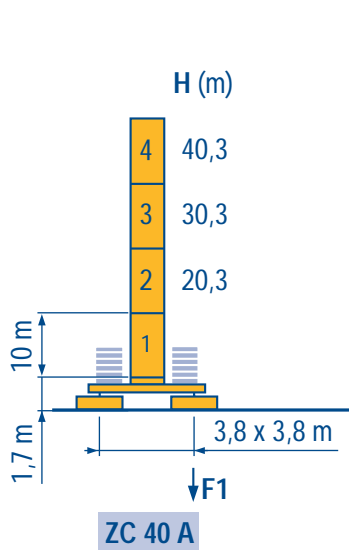
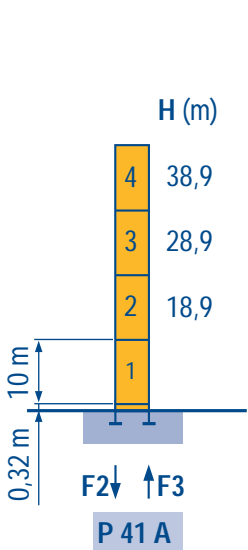
MAXI TOPKIT



Mat / Reactions
Maste / Eckdrücke
City 1,6 m

F **Masts / Reactions**
D **Mástil / Reacciones**
City 1,6 m

GB **Torre / Reazioni**
E **塔身/反力**
City 1,6 m



F2	● 80 t	■ 88 t
F3	● 54 t	■ 64 t
👤	31 t	

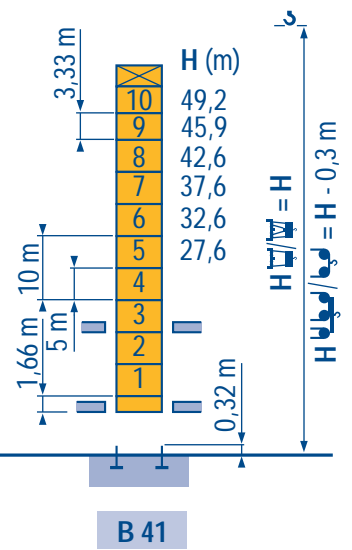
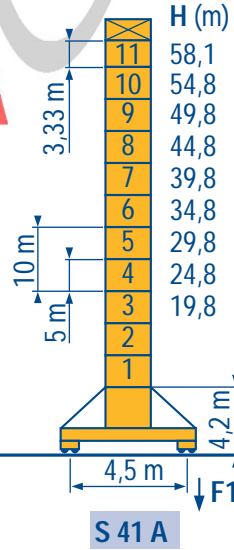
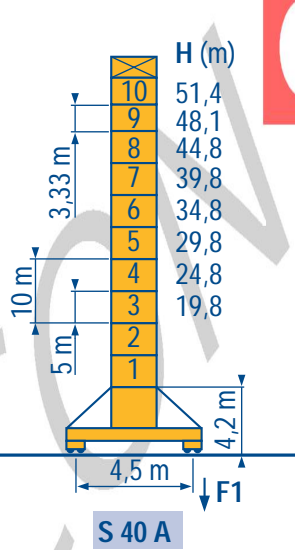
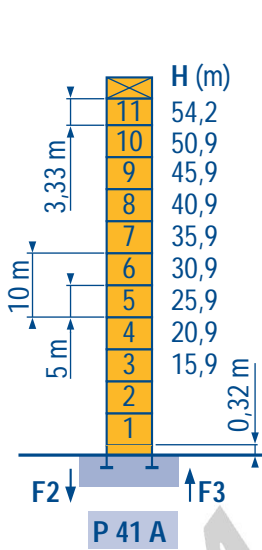
F1	● 58 t	■ 63 t
👤	35 t	

F1	● 65 t	■ 83 t
👤	40 t	

Telescopable 1,6 m
Teleskopierbar 1,6 m

F **Telescopic 1,6 m**
D **Telescopico 1,6 m**

GB **Telescopico 1,6 m**
E **可顶升 1,6 m**



F2	● 115 t	■ 173 t
F3	● 81 t	■ 142 t
👤	46 t	

F1	● 73 t	■ 96 t
👤	50 t	

F1	● 86 t	■ 121 t
👤	54 t	



F Voir télescopage sur dalles
 Réactions en service
 Réactions hors service
 A vide sans lest avec flèche et hauteur maximum.

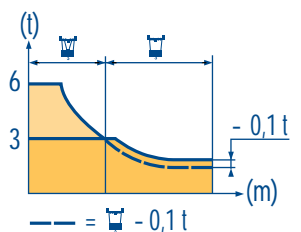
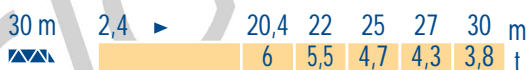
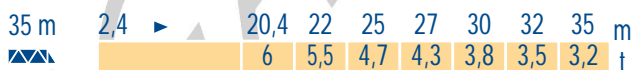
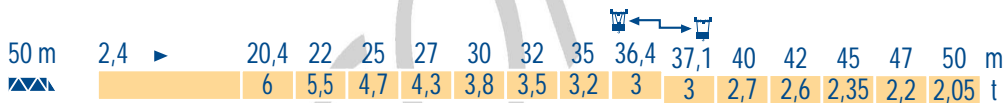
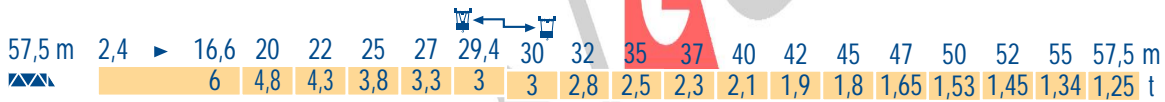
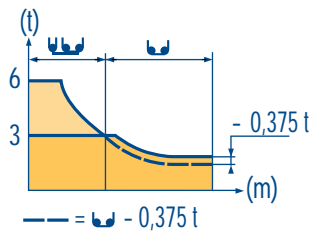
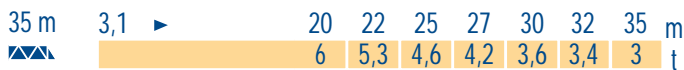
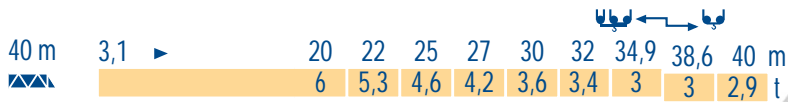
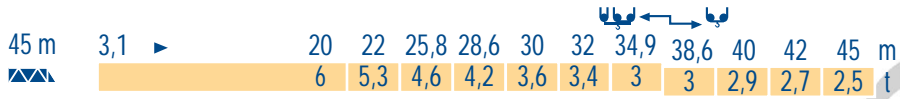
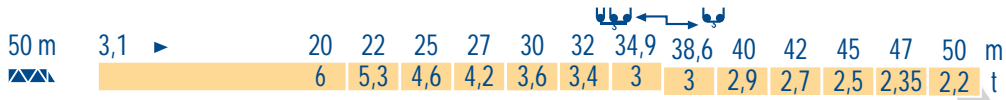
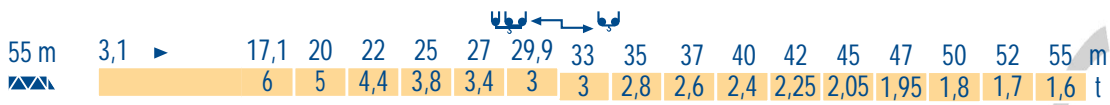
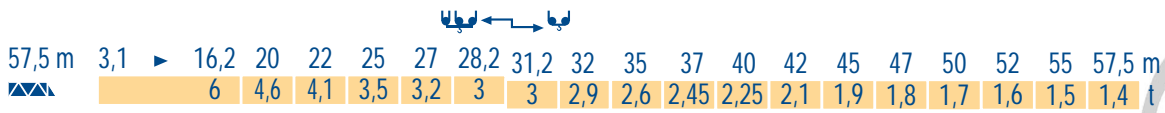
F See climbing crane
 Reactions in service
 Reactions out of service
 Without load and ballast with longest jib and maximum height.

GB Consultare gru in cavedio
 Reazioni in servizio
 Reazioni fuori servizio
 A vuoto senza zavorra e con braccio massimo e altezza massima.

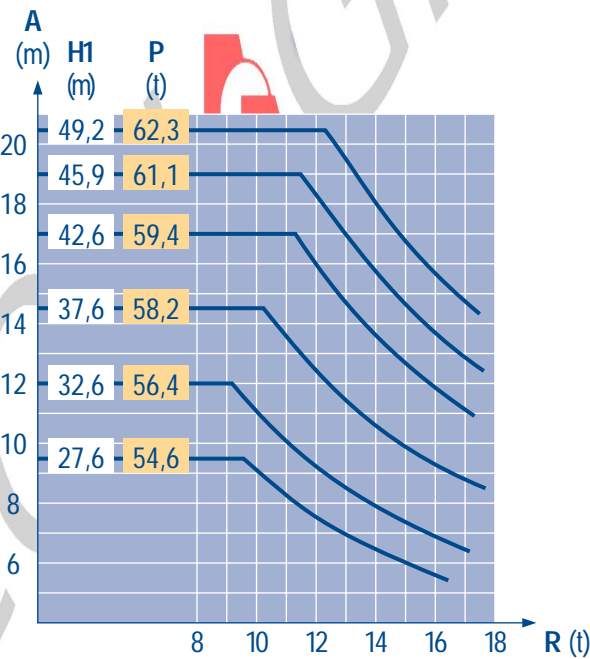
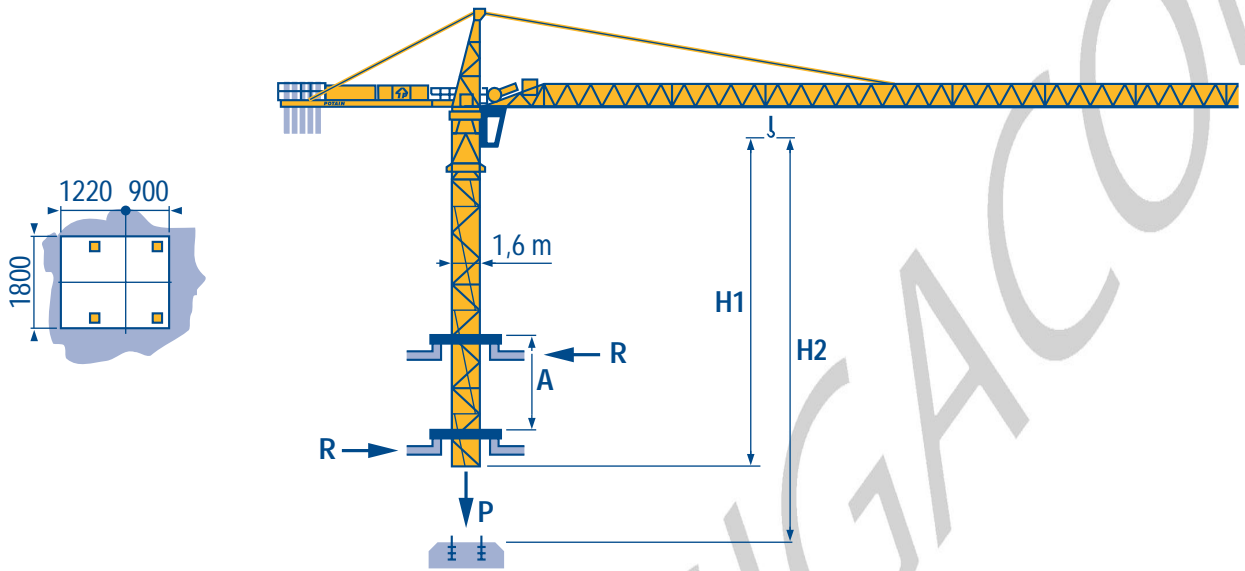
D Siehe kletterkrane im gebäude
 Reaktionskräfte in Betrieb
 Reaktionskräfte außer Betrieb
 Ohne Last und Ballast mit Maximalausleger und Maximalhöhe.

D Vea grua trepadora
 Reacciones en servicio
 Reacciones fuera de servicio
 Sin carga, sin lastre con flecha y altura máxima.

E 见楼板顶升
 工作状态下的反应
 非工作状态下的反应
 空载, 无配重, 起重臂和高度均为最大值



LNO 1



LNQ 1

A Distance entre cadres
H1 Hauteur grue
P Poids de la grue (en service)
R Réaction horizontale

F

Distance between collars
Crane height
Crane weight (in service)
Horizontal reaction

GB

Distanza fra i telai
Altezza gru
Peso della gru (in servizio)
Reazione orizzontale

I

A Abstand zwischen den Rahmen
H1 Kranhöhe
P Krangewicht (in Betrieb)
R Horizontalkräfte

D

Distancia entra marcos
Altura grúa
Peso de la grúa (en servicio)
Reaccion horizontal

E

各附着框之间距离
工作状态下塔机高度
工作状态下塔机重量
水平反力

C

Lest de contre-flèche
Gegenauslegerballast

F
D

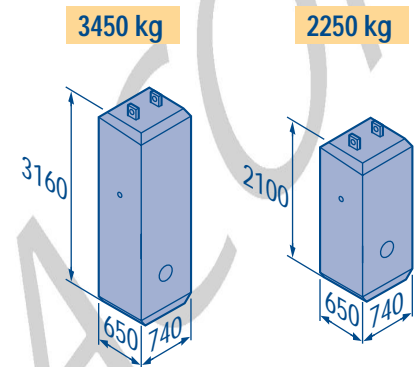
Counter-jib ballast
Lastre de contra flecha

GB
E

Contrappeso
平衡臂重

I
C

			3450 kg	2250 kg	 (kg)
57,5 m		14,3 m	5	-	17 250
55 m		14,3 m	4	1	16 050
50 m		13 m	4	1	16 050
45 m		13 m	3	2	14 850
40 m		13 m	4	-	13 800
35 m		13 m	3	1	12 600
30 m		13 m	2	2	11 400



LNQ 1

Lest de base
Grundballast





F
D

Base ballast
Lastre de base

GB
E

Zavorra di base
压重

I
C

∅1,6 m	ZC 40 A ◀●▶	H (m)	40,3	30,3	20,3						
		 (t)	65	60	55						
∅1,6 m	ZD 40 A ◀●▶	H (m)	50,3	40,3	30,3	20,3					
		 (t)	70	55	45	45					
∅1,6 m	S 40 A ◀●▶	H (m)	51,4	48,1	44,8	39,8	34,8	29,8	24,8	19,8	
		 (t)	84	72	54	36	36	36	36	36	
∅1,6 m	S 41 A ◀●▶	H (m)	58,1	54,8	49,8	44,8	39,8	34,8	29,8	24,8	19,8
		 (t)	114	102	78	54	36	36	36	36	36

LNQ 1

			U				UU				ch - PS hp	kW	
	33 PC 15	m/min	—	6	37,5	75	—	3	19	37,5	33	24	320 m > 320
		t	—	3	3	1,5	—	6	6	3			
	33 LVF 15	m/min	4,6	12	37,5	75	2,3	6	19	37,5	33	24	320 m > 320
		t	3	3	3	1,5	6	6	6	3			
	45 RCS 15	m/min	—	—	0 → 52,5	0 → 105	—	—	0 → 26	0 → 52	45	33	472 m > 472
		t	—	—	3	1,5	—	—	6	3			
	4 D3 V3	m/min	15 - 30 - 58								4	3	
	RCV 145	tr/min U/min rpm	0 → 0,8								2 x 6	2 x 4,4	
ZC 40 A ZD 40 A 	RT 224	m/min	25								2 x 4	2 x 2,9	
S 40 A R ≥ 10 m	RT 324	m/min	12,5 - 25								2 x 7	2 x 5,2	
	TCV 449 ARC H ≤ 34,8 m	m/min	10 - 50								4 x 6,8	4 x 5	
S 41 A R ≥ 10 m	RT 443 A1 2V	m/min	15 - 30								4 x 5	4 x 3,7	
	TCV 449 ARC H ≤ 34,8 m	m/min	10 - 50								4 x 6,8	4 x 5	

CEI 38	IEC 38	kVA	
400 V (+6% -10%) 50 Hz		33 PC : 50 kVA 33 LVF : 50 kVA 45 RCS : 65 kVA	84/534 - 87/405

LNQ 1

Levage Distribution Orientation Translation Conforme aux directives CEE 84/534 et 87/405 sur le niveau acoustique Nous consulter	F	Hoisting Trolleying Slewing Travelling In compliance with the EEC 84/534 and 87/405 Instructions on noise level Consult us	GB	Sollevamento Distribuzione Rotazione Traslazione Conforme alle direttive CEE 84/534 e 87/405 sul livello acustico Consultateci	I
	Heben Katzfahren Schwenken Kranfahren Gemäss EWG-Richtlinien 84/534 und 87/405 für den Schall-Leistungspegel Auf Anfrage	D	Elevación Distribución Orientación Traslación Conforme con las directivas CEE 84/534 y 87/405 sobre el nivel acustico Consultarnos	E	起升 变幅 回转 行走 符合 CEE 84/534 - CEE 87/405 声晌度规定 请向我方咨询

POTAIN
 GROUPE LEGRIS INDUSTRIES

CITY CRANE MD 125 A

Copyright.Reproduction interdite © POTAIN 1997

18.Rue de Charbonnières, B.P. 173-F
 69132 ECULLY Cedex
 Tél. (33)04.72.20.20.00
 Fax (33)04.72.20.20.00
 http://www.potain.fr
 E-mail : mkt@potain.fr

Deutschland
 POTAIN GmbH Tel : 06.105.704.0
Italia
 POTAIN S.p.A. Tel : 039.65.631
China
 Zhangjiagang POTAIN Tel : 520. 877.1451