

## TOPKIT MC 180

**POTAIN** 



Mats - Maste - Masti  
Mástil - Torre - 塔身



1,6m

Flèche - Ausleger - Jib  
Flecha - Braccio - 起重臂  
40m = 55m



**P 16 A**

F2	● 100t	■ 125t
F3	● 66t	■ 96t
⊕	43t	



**SB 16 A**

F1	● 74t	■ 90t
⊕	51t	



**BA 45 A**

Voir ci contre  
Siehe nebenstehend  
See opposite  
Ver pagina opuesta  
Vedi pagina accanto  
见旁图

Mats - Maste - Masti  
Mástil - Torre - 塔身



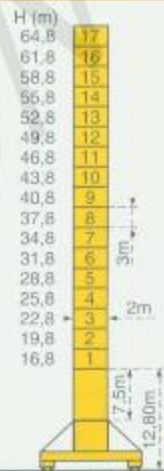
2m

Flèche - Ausleger - Jib  
Flecha - Braccio - 起重臂  
40m = 60m



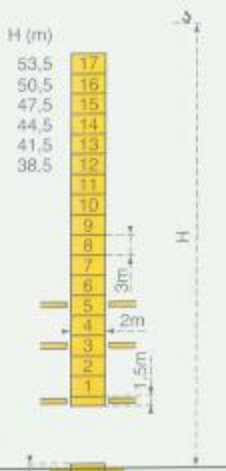
**P 20 A**

F2	● 119t	■ 196t
F3	● 77t	■ 159t
⊕	58t	



**VB 20 A**

F1	● 95t	■ 134t
⊕	70t	

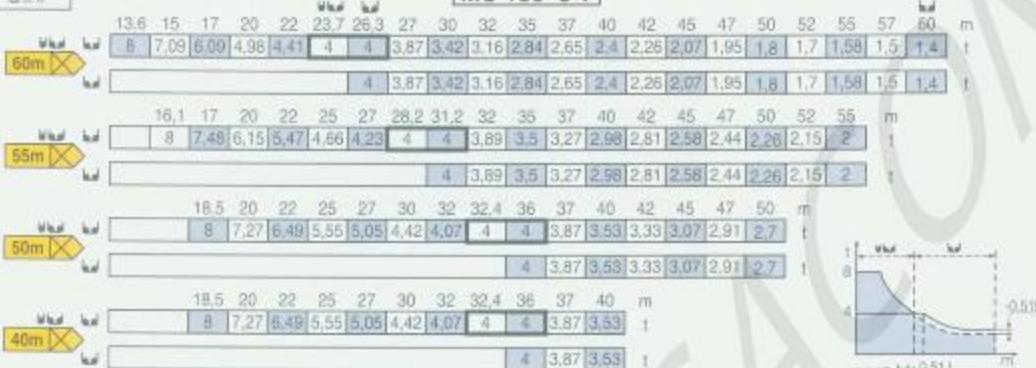


**BA 65 A**

Nous consulter  
Auf Anfrage  
Consult us  
Consultarnos  
Consultateci  
咨询我方资料

## Courbes de charges Lastkurven - Load diagrams Curvas de cargas - Curve di carico - 負荷曲線

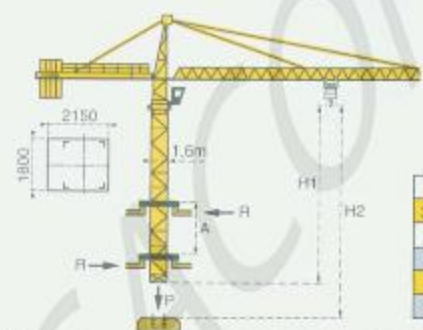
### MC 180 8 T



### MC 180 10 T

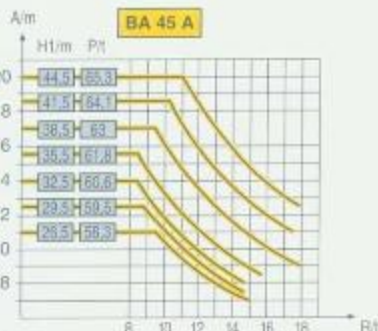


## Télescopage sur dalles - Kletterkrane im Gebäude - Climbing crane Telescopage gruas trepadoras - Gru in cavedio - 樓板上頂升



Mât de 2m : nous consulter  
Mast von 2m : Auf Anfrage  
2 m mast; consult us  
Torre 2m : consultamos  
Tower 2m : consultaci  
2米塔身：請向我們查詢

H2			
33 PC 20 -1	55 RCS 20D		
90m 180m	141m 283m		
33 PC 25	55 RCS 25/13		
90m 180m	140m 280m		



A Distance entre cadres  
H1 Hauteur grue  
P Poids de la grue (en service)  
R Réaction horizontale

A Abstand zwischen den Rahmen  
H1 Kranhöhe  
P Krangewicht (in Betrieb)  
R Horizontalkräfte

A Distance between collars  
H1 Crane height  
P Crane weight (in service)  
R Horizontal reaction

A Distancia entre marcos  
H1 Altura grúa  
P Peso de la grúa (en servicio)  
R Reacción horizontal

A Distanza fra i telai  
H1 Altezza gru  
P Peso della gru (in servizio)  
R Reazione orizzontale

A 各副塔身之間距離  
H1 工作狀態下塔身高度

P 工作狀態下塔機重量  
R 水平反力

- En service
- Hors service
- ⊕ A vide sans lest avec flèche et hauteur maximum.

- In Betrieb
- Ausser Betrieb
- ⊕ Ohne Last und Ballast mit Maximalausleger und Maximalhöhe.










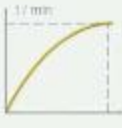





- In service
- Out of service
- ⊕ Without load and ballast with longest jib and maximum height.

- En servicio
- Fuera de servicio
- ⊕ Sin carga, sin lastre con flecha y altura máxima.

- In servizio
- Fuori servizio
- ⊕ A vuoto senza zavorra e con braccio massimo e altezza massima.

- 工作狀態
- 非工作狀態
- ⊕ 空載、無配重、起重臂和高度均為最大值

Mécanismes - Antriebe - Mechanisms - Mecanismos - Meccanismi - 机构

			m/min	t	m/min	t		ch -PS hp	kW	
Levage Heben Hoisting Elevación Sollevamento 提升	 RCS	 8t					360m >360m*	33	24	
			33 PC 20 - 1	4,6 28 56	4 4 2	2,3 14 28				8 8 4
	 RCS	 10t					566m >566m*	55	40,5	
			55 RCS 20D	0 → 52 0 → 104	4 2	0 → 26 0 → 52				8 4
			33 PC	4,6 23	5 5	2,3 11,5				10 10
			25 RCS 25/13	46 0 → 42 0 → 84	2,5 5 2,6	23 0 → 21 0 → 42				5 10 5,2
Distribution Katzfahren Trolleying Distribución Distribuzione 变频			5 D3 V4 - 1		15-30-58			5	3,7	
Orientation Schwenken Slewing Orientación Rotazione 回转			RVC 145		0 → 0,8 tr/min rpm			2x6	2x4,4	
Translation Kranfahren Travelling Traslación Traslazione 行走	1,6 m 	SB 16A  R ≥ 10m	RT 324		12,5 - 25			2x7	2x5,2	
			TCV 449 ARC H ≤ 35,2m		10 - 50		4x6,8	4x5		
	2 m 	VB 20A  R ≥ 13m	RT 544 A1 2V		13,5 - 27		4x7	4x5,2		
		TCV 649 ARC H ≤ 43,4m		10 - 50		4x6,8	4x5			
Réseau - Netzstrom - Mains supply - Red - Rete elettrica - 电网							CEI 38 IEC 38	400V(+6%-10%) 50 Hz		
Puissance électrique nécessaire - Anschlusswert - Necessary electric power Potencia eléctrica necesaria - Potenza elettrica necessaria - 所需功率								33 PC : 50 KVA 55 RCS : 80 KVA		
Groupe électrogène - Stromaggregat - Generator set - Grupo electrogeno - Gruppo elettrogeno - 发电机组								-		

\*Nous consulter - Auf Anfrage - Consult us - Consultamos - Consultateci - 请向我方咨询

Conforme aux directives CEE 84/534 et 87/405 sur le niveau acoustique - Gemäss EWO-Richtlinien 84/534 und 87/405 für den Schall-Leistungspegel  
In compliance with the EEC 84/534 and 87/405 instructions on noise level - Conforme con las directivas CEE 84/534 y 87/405 sobre el nivel acústico  
Conforme alle direttive CEE 84/534 e 87/405 sul livello acustico - 符合 CEE 84/534 - CEE 87/405 声功率规范



Copyright.Reproduction interdite © POTAIN 1995

**POTAIN** 

GRUPE LEGRIS INDUSTRIES

18-Rue de Charbonnières, B.P. 173-F 69132 ECULLY Cedex  
Tel: (33)04.72.20.20.20 - Fax: (33)04.72.20.20.00  
http://www.potain.fr - E-mail: mkt@potain.fr

POTAIN GmbH Deutschland Tel: 06.105.734.0  
SIMMAPOTAIN Italia Tel: 039.65.631  
Zhangjiagang POTAIN China Tel: 520.677.1451

TOPKIT MC 180

Ref. 1995.24 LJA 2