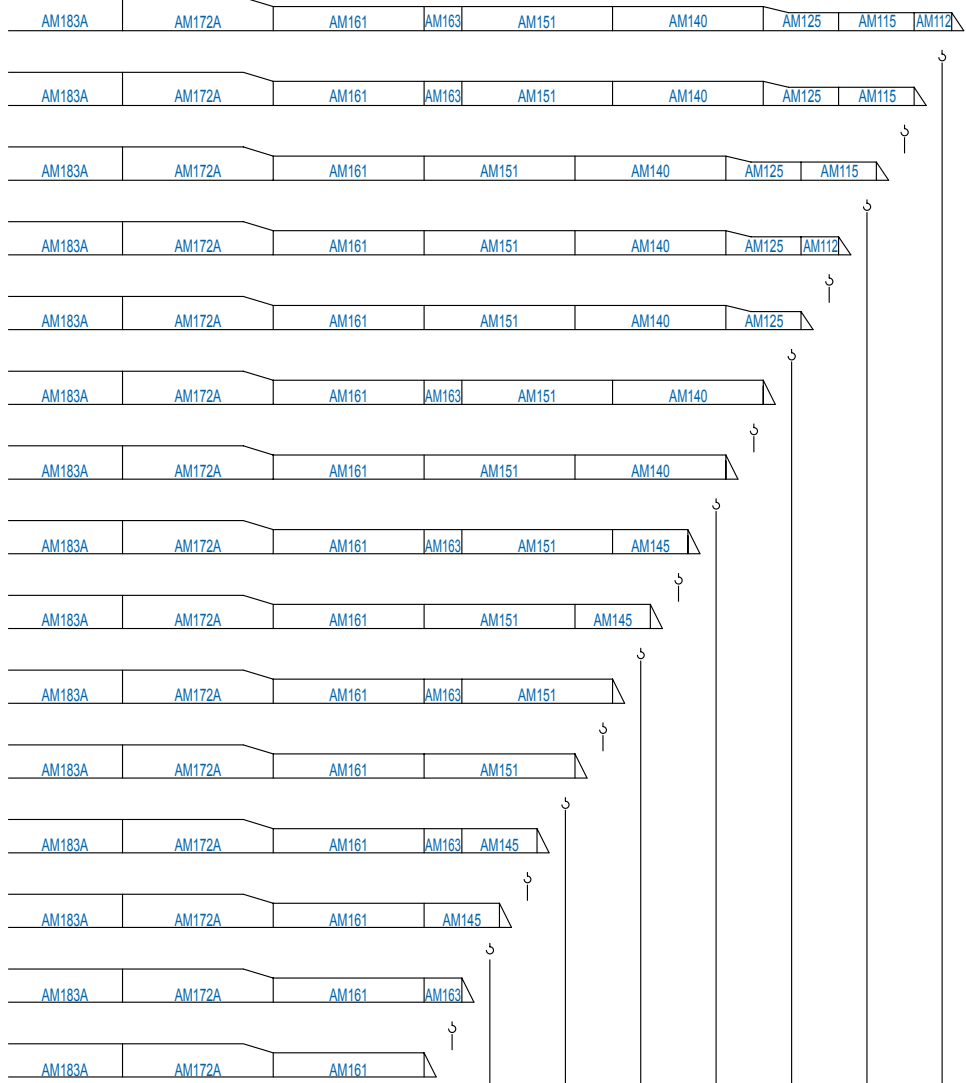


LC 1100

(H = H - 0,2 m)



| R | 5100 | 30,0 | 5110 | 32,5 | 4670 | 35,0 | 4230 | 37,5 | 4000 | 40,0 | 4000 | 42,5 | 3790 | 45,0 | 3550 | 47,5 | 3190 | 50,0 | 2750 | 52,5 | 2640 | 55,0 | 2420 | 57,5 | 2200 | 60,0 | 1810 | 62,5 | 1540 | 65,0 | m |
|---|------|------|------|------|------|------|------|------|------|------|------|------|------|------|------|------|------|------|------|------|------|------|------|------|------|------|------|------|------|------|----|
| | 5100 | 30,0 | 5110 | 32,5 | 4670 | 35,0 | 4230 | 37,5 | 4000 | 40,0 | 4000 | 42,5 | 3790 | 45,0 | 3550 | 47,5 | 3190 | 50,0 | 2750 | 52,5 | 2640 | 55,0 | 2420 | 57,5 | 2200 | 60,0 | 1810 | 62,5 | 1540 | 65,0 | kg |

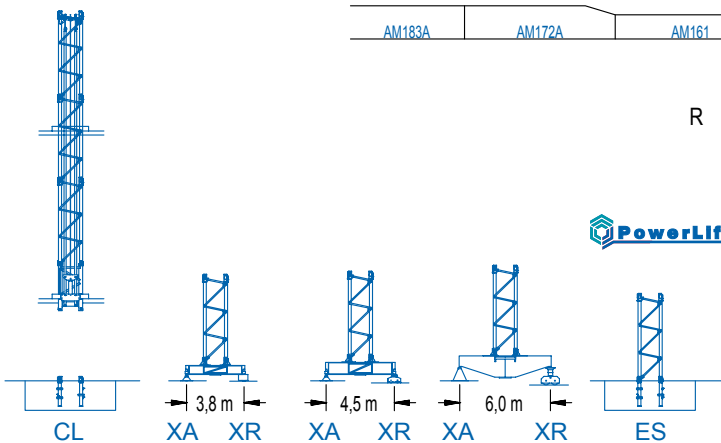


DIAGRAMA DE CARGAS

Load chart / Diagramme de charges / Lastdiagramm / Diagramma di carico / Диаграмма распределения нагрузки

| R (m) | Icon | | | | | | | | | | Icon | | | | | | | | | | | |
|-------|------|------|------|------|------|------|------|------|------|------|------|------|------|------|------|------|------|------|------|------|------|----|
| 65,0 | 13,8 | 15 | 20 | 24,7 | 26,8 | 28 | 30 | 32,5 | 35 | 37,5 | 40 | 42,5 | 45 | 47,5 | 50 | 52,5 | 55 | 57,5 | 60 | 62,5 | 65 | m |
| | 8000 | 7250 | 5160 | 4000 | 4000 | 3800 | 3520 | 3210 | 2950 | 2730 | 2530 | 2350 | 2200 | 2060 | 1940 | 1830 | 1730 | 1630 | 1550 | 1470 | 1400 | kg |
| 62,5 | | 15,1 | 20 | 23 | 26,9 | 29,3 | 30 | 32,5 | 35 | 37,5 | 40 | 42,5 | 45 | 47,5 | 50 | 52,5 | 55 | 57,5 | 60 | 62,5 | m | |
| | | 8000 | 5720 | 4850 | 4000 | 4000 | 3890 | 3560 | 3270 | 3020 | 2810 | 2620 | 2450 | 2300 | 2160 | 2040 | 1930 | 1830 | 1740 | 1650 | kg | |
| 60,0 | | 16,8 | 20 | 23 | 25 | 28 | 30,1 | 32,9 | 35 | 37,5 | 40 | 42,5 | 45 | 47,5 | 50 | 52,5 | 55 | 57,5 | 60 | m | | |
| | | 8000 | 6530 | 5540 | 5020 | 4380 | 4000 | 4000 | 3730 | 3450 | 3210 | 2990 | 2800 | 2630 | 2480 | 2340 | 2220 | 2100 | 2000 | kg | | |
| 57,5 | | 17,4 | 20 | 23 | 25 | 28 | 31,2 | 34,1 | 35 | 37,5 | 40 | 42,5 | 45 | 47,5 | 50 | 52,5 | 55 | 57,5 | m | | | |
| | | 8000 | 6800 | 5780 | 5240 | 4570 | 4000 | 4000 | 3890 | 3600 | 3350 | 3120 | 2930 | 2750 | 2590 | 2450 | 2320 | 2200 | kg | | | |
| 55,0 | | 17,9 | 20 | 23 | 25 | 28 | 30 | 32,1 | 35,1 | 37,5 | 40 | 42,5 | 45 | 47,5 | 50 | 52,5 | 55 | m | | | | |
| | | 8000 | 7020 | 5970 | 5410 | 4730 | 4350 | 4000 | 4000 | 3720 | 3460 | 3230 | 3030 | 2840 | 2680 | 2530 | 2400 | kg | | | | |
| 52,5 | | 17,6 | 20 | 23 | 25 | 28 | 31,8 | 34,7 | 35 | 37,5 | 40 | 42,5 | 45 | 47,5 | 50 | 52,5 | m | | | | | |
| | | 8000 | 6920 | 5880 | 5330 | 4660 | 4000 | 4000 | 3970 | 3670 | 3410 | 3190 | 2990 | 2810 | 2650 | 2500 | kg | | | | | |
| 50,0 | | 19,0 | 20 | 23 | 25 | 28 | 30 | 32 | 34,3 | 37,6 | 40 | 42,5 | 45 | 47,5 | 50 | m | | | | | | |
| | | 8000 | 7560 | 6430 | 5840 | 5110 | 4710 | 4350 | 4000 | 4000 | 3730 | 3490 | 3270 | 3070 | 2900 | kg | | | | | | |
| 47,5 | | 18,9 | 20 | 23 | 25 | 28 | 30 | 32 | 34,0 | 37,3 | 40 | 42,5 | 45 | 47,5 | m | | | | | | | |
| | | 8000 | 7490 | 6380 | 5790 | 5060 | 4660 | 4310 | 4000 | 4000 | 3700 | 3460 | 3240 | 3050 | kg | | | | | | | |
| 45,0 | | 19,9 | 23 | 25 | 28 | 30 | 32 | 35,9 | 39,4 | 40 | 42,5 | 45 | m | | | | | | | | | |
| | | 8000 | 6780 | 6150 | 5390 | 4970 | 4600 | 4000 | 4000 | 3940 | 3680 | 3450 | kg | | | | | | | | | |
| 42,5 | | 20,0 | 23 | 25 | 28 | 30 | 32 | 36,0 | 39,6 | 40 | 42,5 | m | | | | | | | | | | |
| | | 8000 | 6810 | 6180 | 5410 | 4990 | 4620 | 4000 | 4000 | 3960 | 3700 | kg | | | | | | | | | | |
| 40,0 | | 19,9 | 23 | 25 | 28 | 30 | 32 | 35,9 | 39,6 | 40 | m | | | | | | | | | | | |
| | | 8000 | 6780 | 6160 | 5390 | 4970 | 4600 | 4000 | 4000 | 3950 | kg | | | | | | | | | | | |
| 37,5 | | 19,9 | 23 | 25 | 28 | 30 | 32 | 35,9 | 37,5 | m | | | | | | | | | | | | |
| | | 8000 | 6780 | 6160 | 5400 | 4970 | 4600 | 4000 | 4000 | kg | | | | | | | | | | | | |
| 35,0 | | 20,1 | 23 | 25 | 28 | 30 | 32 | 35 | 37,5 | m | | | | | | | | | | | | |
| | | 8000 | 6870 | 6240 | 5470 | 5040 | 4660 | 4250 | kg | | | | | | | | | | | | | |
| 32,5 | | 20,1 | 23 | 25 | 28 | 30 | 32,5 | m | | | | | | | | | | | | | | |
| | | 8000 | 6870 | 6240 | 5460 | 5040 | 4650 | kg | | | | | | | | | | | | | | |
| 30,0 | | 20,1 | 23 | 25 | 28 | 30 | m | | | | | | | | | | | | | | | |
| | | 8000 | 6840 | 6210 | 5440 | 5100 | kg | | | | | | | | | | | | | | | |

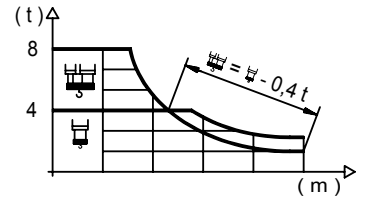
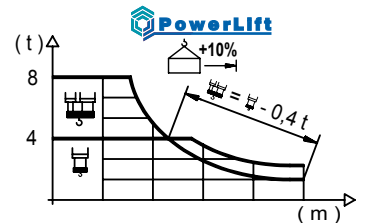


DIAGRAMA DE CARGAS POWERLIFT

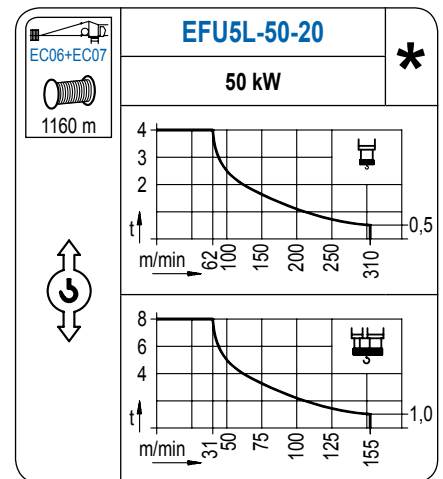
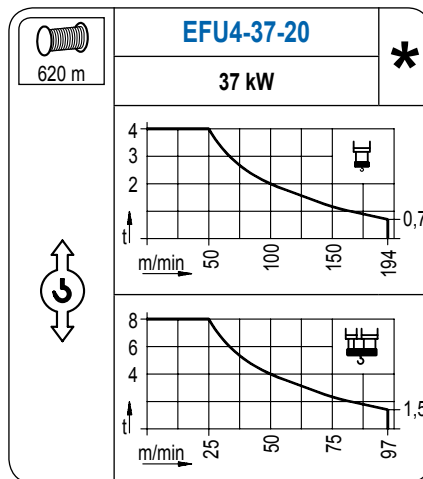
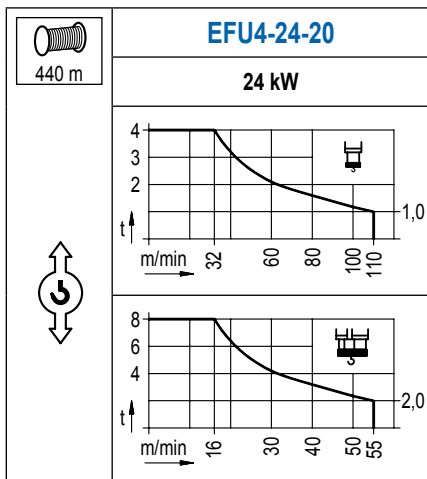
Load chart PowerLift / Diagramme de charges PowerLift / Lastdiagramm PowerLift / Diagramma di carico PowerLift / Диаграмма распределения нагрузки PowerLift

| R (m) | Icon | | | | | | | | | | Icon | | | | | | | | | | | |
|-------|------|------|------|------|------|------|------|------|------|------|------|------|------|------|------|------|------|------|------|------|------|----|
| 65,0 | 14,5 | 18 | 20 | 23 | 26,0 | 28,8 | 30 | 32,5 | 35 | 37,5 | 40 | 42,5 | 45 | 47,5 | 50 | 52,5 | 55 | 57,5 | 60 | 62,5 | 65 | m |
| | 8000 | 6220 | 5500 | 4650 | 4000 | 4000 | 3830 | 3500 | 3210 | 2970 | 2760 | 2570 | 2400 | 2260 | 2120 | 2000 | 1890 | 1790 | 1700 | 1620 | 1540 | kg |
| 62,5 | | 15,8 | 18 | 20 | 23 | 25 | 28,5 | 31,6 | 32,5 | 35 | 37,5 | 40 | 42,5 | 45 | 47,5 | 50 | 52,5 | 55 | 57,5 | 60 | 62,5 | m |
| | | 8000 | 6900 | 6110 | 5180 | 4680 | 4000 | 4000 | 3870 | 3561 | 3294 | 3060 | 2855 | 2673 | 2510 | 2364 | 2232 | 2112 | 2002 | 1902 | 1810 | kg |
| 60,0 | | 17,8 | 20 | 23 | 25 | 28 | 30 | 32,1 | 35,6 | 37,5 | 40 | 42,5 | 45 | 47,5 | 50 | 52,5 | 55 | 57,5 | 60,0 | m | | |
| | | 8000 | 7010 | 5960 | 5410 | 4720 | 4350 | 4000 | 4000 | 3770 | 3510 | 3278 | 3072 | 2887 | 2722 | 2573 | 2437 | 2313 | 2200 | kg | | |
| 57,5 | | 18,5 | 20 | 23 | 25 | 28 | 30 | 33,4 | 37,0 | 37,5 | 40 | 42,5 | 45 | 47,5 | 50 | 52,5 | 55 | 57,5 | m | | | |
| | | 8000 | 7320 | 6230 | 5650 | 4940 | 4550 | 4000 | 4000 | 3940 | 3664 | 3423 | 3208 | 3017 | 2845 | 2690 | 2549 | 2420 | kg | | | |
| 55,0 | | 19,1 | 20 | 23 | 25 | 28 | 30 | 32,5 | 34,4 | 38,1 | 40 | 42,5 | 45 | 47,5 | 50 | 52,5 | 55,0 | m | | | | |
| | | 8000 | 7580 | 6450 | 5850 | 5120 | 4720 | 4280 | 4000 | 4000 | 3790 | 3541 | 3320 | 3123 | 2946 | 2785 | 2640 | kg | | | | |
| 52,5 | | 18,9 | 20 | 23 | 25 | 28 | 30 | 32,5 | 34,0 | 37,7 | 40 | 42,5 | 45 | 47,5 | 50 | 52,5 | m | | | | | |
| | | 8000 | 7480 | 6370 | 5780 | 5050 | 4660 | 4230 | 4000 | 4000 | 3743 | 3497 | 3279 | 3084 | 2908 | 2750 | kg | | | | | |
| 50,0 | | 20,4 | 23 | 25 | 28 | 30 | 32,5 | 35 | 36,9 | 40,9 | 42,5 | 45 | 47,5 | 50,0 | m | | | | | | | |
| | | 8000 | 6980 | 6340 | 5560 | 5120 | 4660 | 4260 | 4000 | 4000 | 3829 | 3592 | 3380 | 3190 | kg | | | | | | | |
| 47,5 | | 20,3 | 23 | 25 | 28 | 30 | 32,5 | 35 | 36,5 | 40,5 | 42,5 | 45 | 47,5 | m | | | | | | | | |
| | | 8000 | 6920 | 6280 | 5500 | 5070 | 4610 | 4220 | 4000 | 4000 | 3795 | 3560 | 3350 | kg | | | | | | | | |
| 45,0 | | 21,4 | 23 | 25 | 28 | 30 | 32,5 | 35 | 37,5 | 38,6 | 42,9 | 45,0 | m | | | | | | | | | |
| | | 8000 | 7360 | 6690 | 5870 | 5420 | 4930 | 4510 | 4150 | 4000 | 4000 | 3790 | kg | | | | | | | | | |
| 42,5 | | 21,5 | 23 | 25 | 28 | 30 | 32,5 | 35 | 37,5 | 38,9 | m | | | | | | | | | | | |
| | | 8000 | 7420 | 6740 | 5910 | 5460 | 4960 | 4540 | 4180 | 4000 | 4000 | kg | | | | | | | | | | |
| 40,0 | | 21,5 | 23 | 25 | 28 | 30 | 32,5 | 35 | 39,6 | 40,0 | m | | | | | | | | | | | |
| | | 8000 | 7390 | 6720 | 5890 | 5440 | 4940 | 4530 | 4000 | 4000 | kg | | | | | | | | | | | |
| 37,5 | | 21,5 | 23 | 25 | 28 | 30 | 32,5 | 35 | 37,1 | m | | | | | | | | | | | | |
| | | 8000 | 7400 | 6730 | 5900 | 5440 | 4950 | 4530 | 4230 | kg | | | | | | | | | | | | |
| 35,0 | | 21,8 | 23 | 25 | 28 | 30 | 32,5 | 34,6 | m | | | | | | | | | | | | | |
| | | 8000 | 7510 | 6820 | 5990 | 5520 | 5030 | 4670 | kg | | | | | | | | | | | | | |
| 32,5 | | 21,8 | 23 | 25 | 28 | 30 | 32,1 | m | | | | | | | | | | | | | | |
| | | 8000 | 7510 | 6830 | 5990 | 5530 | 5110 | kg | | | | | | | | | | | | | | |
| 30,0 | | 21,7 | 23 | 25 | 28 | 29,6 | m | | | | | | | | | | | | | | | |
| | | 8000 | 7500 | 6820 | 5980 | 5610 | kg | | | | | | | | | | | | | | | |



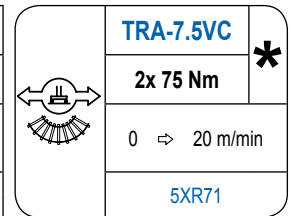
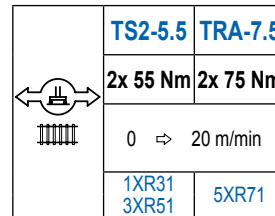
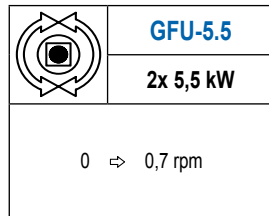
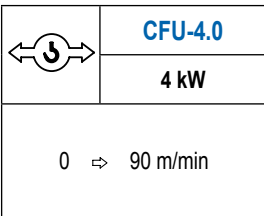
MECANISMOS

Mechanisms / Mécanismes / Antriebe / Meccanismi / Механизмы



MECANISMOS

Mechanisms / Mécanismes / Antriebe / Meccanismi / Механизмы



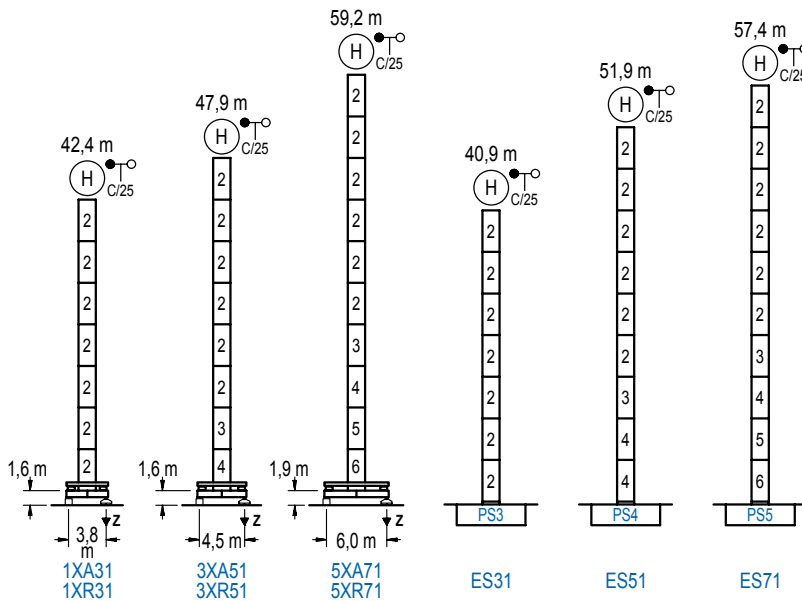
| POTENCIA / POWER / PUISSANCE / LEISTUNG / POTENZA / МОЩНОСТЬ | | | | Tensión de alimentación / Operating voltage / Tension de service / Betriebsspannung / Tensione di alimentazione / Напряжение источника питания | Generador / Generator / Générateur / Generator / Generatore / Генератор |
|--|--|--|---|--|---|
| Elevación / Hoist / Levage / Hub / Sollevamento / Тип механизма (подъем) | Carro / Trolley / Chariot / Laufkatze / Carro / Грузовая тележка | Giro / Slewing / Rotation / Drehbewegung / Rotazione / Поворот | Traslación / Travel / Translation / Verfahrbewegung / Traslazione / Ход | | |
| EFU4-24-20 | CFU-4.0 | (2x) GFU-5.5 | (2x) TS2-5.5 | 400 V | 75 kVA |
| EFU4-37-20 | | | (2x) TRA-7.5 | 3ph | 105 kVA |
| EFU5L-50-20 | | | | 50 Hz | 125 kVA |

Optional / Optional / En option / Kaufoption / Opzionale / Опционально
*

ALTURAS BAJO GANCHO

Heights under hook / Hauteurs sous crochet / Hakenhöhen / Altezza sotto gancio / Высота под крюком

∅ 1,6 m

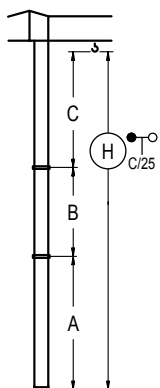


| n° | Ref. | ∅ | h |
|----|------|-----|-----|
| 2 | S13 | 1,6 | 5,5 |
| 3 | TS14 | 1,6 | 5,5 |
| 4 | S14 | 1,6 | 5,5 |
| 5 | TS15 | 1,6 | 5,5 |
| 6 | S15 | 1,6 | 5,5 |

| Z máx. | En servicio / In operation / En service / In Betrieb / In servizio / При работе | 1XR31..... 73 t 3XR51..... 71 t 5XR71..... 77 t |
|--------|--|--|
| | Fuera de servicio / Out of service / Hors service / Ausser Betrieb / Fuori servizio / В стационарном состоянии | 1XR31..... 71 t 3XR51..... 78 t 5XR71..... 110 t |

GRÚA ARRIOSTRADA

Braced crane / Grue à entretoisement / Abgespannter Kran / Gru ancorata / Нарастиваемый кран

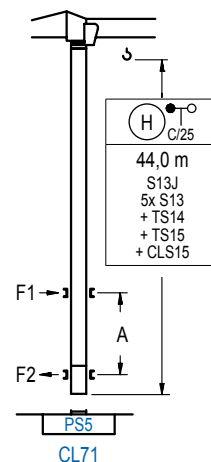


| | 1XA31 | 3XA51 | 5XA71 |
|-------|-----------|-----------|------------|
| A max | 29,1 | 34,6 | 45,9 |
| B max | - 22,0 | - 22,0 | - 22,0 |
| C max | 35,3 35,3 | 35,3 35,3 | 35,3 35,3 |
| H max | 64,4 86,4 | 69,9 91,9 | 81,2 103,2 |

| | ES31 | ES51 | ES71 |
|-------|-----------|-----------|------------|
| A max | 27,6 | 38,6 | 44,1 |
| B max | - 22,0 | - 22,0 | - 22,0 |
| C max | 35,3 35,3 | 35,3 35,3 | 35,3 35,3 |
| H max | 62,9 84,9 | 73,9 95,9 | 79,4 101,4 |

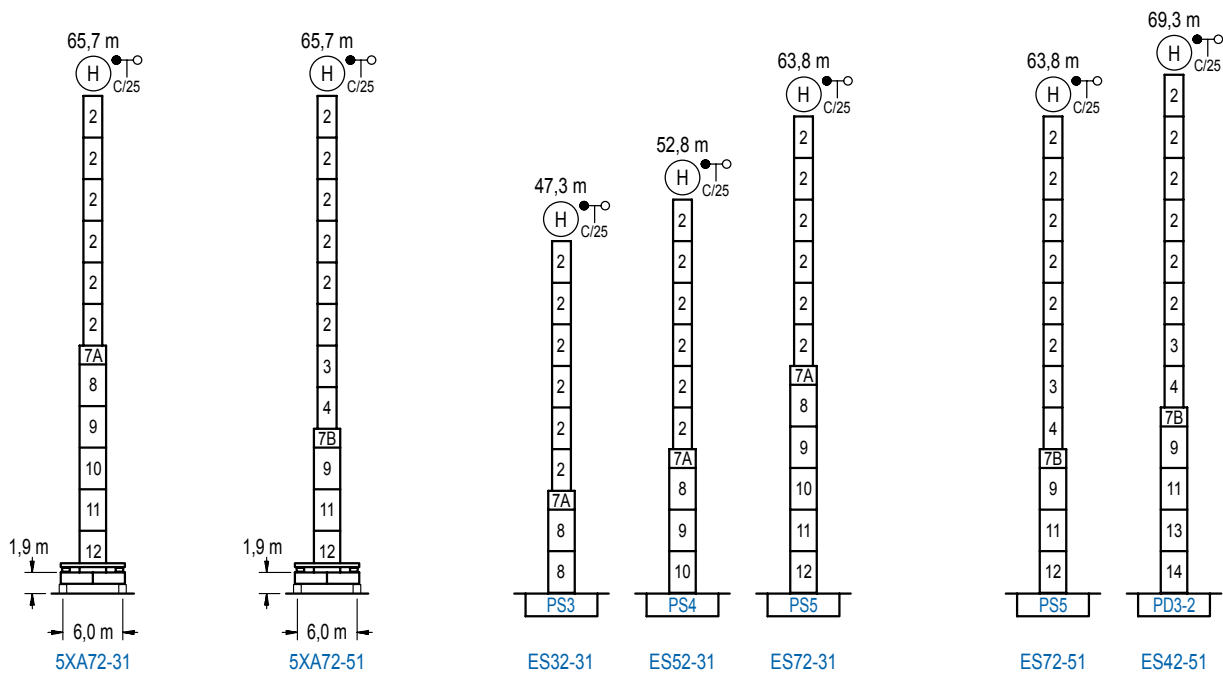
GRÚA TREPADORA

Internal climbing crane / Grue avec cage de télescopage intérieure / Kran mit klettern im Gebäude / Gru in rampante in cavedio / Монтажная кль



| n° | Ref. | ∅ | h |
|----|-------|-----|-----|
| 2 | S13 | 1,6 | 5,5 |
| 3 | TS14 | 1,6 | 5,5 |
| 5 | TS15 | 1,6 | 5,5 |
| 23 | CLS15 | 1,6 | 3,1 |

Otras zonas de viento, alturas superiores, arriostramientos o trepado interno consultar / Other wind zones, additional hook heights, tie frames or internal climbing on request / Autres zones de vent, des hauteurs supplémentaires, entretoisements ou grues avec cage de télescopage intérieure, sur demande / Andere Windzonen, weitere Hakenhöhen, Abspannungen zum Gebäude oder Klettern im Gebäude auf Anfrage / Per zone con velocità del vento particolari, altezze superiori, ancoraggi o rampante in cavedio, consultare il fabbricante / При других ветренных зонах, при большой высоте, привязках к зданию или наращивании крана внутри здания проконсультируйтесь с нами



| n° | Ref. | ∅ | h | n° | Ref. | ∅ | h | n° | Ref. | ∅ | h |
|----|------|-----|-----|----|------------|-----|-----|----|-------|-----|-----|
| 2 | S13 | 1,6 | 5,5 | 7A | TMS23/PMS3 | 2,0 | 1,0 | 11 | TS25 | 2,0 | 5,5 |
| 3 | TS14 | 1,6 | 5,5 | 7B | TMS23/PMS4 | 2,0 | 1,0 | 12 | S25 | 2,0 | 5,5 |
| 4 | S14 | 1,6 | 5,5 | 8 | S23 | 2,0 | 5,5 | 13 | TD23A | 2,0 | 5,5 |
| 5 | TS15 | 1,6 | 5,5 | 9 | TS24 | 2,0 | 5,5 | 14 | D23 | 2,0 | 5,5 |
| 6 | S15 | 1,6 | 5,5 | 10 | S24 | 2,0 | 5,5 | | | | |

Otras zonas de viento o alturas superiores consultar / Other wind zones or additional hook heights on request / Autres zones de vent ou des hauteurs supplémentaires sur demande / Andere Windzonen oder weitere Hakenhöhen auf Anfrage / Per zone con velocità del vento particolari o altezze superiori consultare il fabbricante / При других ветренных зонах о при большой высоте проконсультируйтесь с нами



Construcciones Metálicas COMANSA S. A.

Tel.: (34) 948 335 020 / Fax: (34) 948 330 810

e-mail: info@comansa.com / www.comansa.com

Polígono Urbizkain

E-31620 HUARTE-PAMPLONA.- SPAIN

