



Cat[®]

TL1255C

Telehandler

Specifications

Engine

Model	Cat [®] C4.4 ACERT™ Tier 4 Interim	
Gross Power (Basic)	106 kW	142.1 hp

Weights

Operating Weight	16 267 kg	35,860 lb
------------------	-----------	-----------

Operating Specifications

Rated Load Capacity	5443 kg	12,000 lb
Maximum Lift Height	16.6 m	54.3 ft
Maximum Forward Reach	13 m	42.5 ft
Frame Leveling	10°	
Top Travel Speed	32.8 kph	20.4 mph
Capacity at Max Height (o/r Up)	1814 kg	4,000 lb
Capacity at Max Height (o/r Down)	2268 kg	5,000 lb
Capacity at Max Reach (o/r Up)	—	—
Capacity at Max Reach (o/r Down)	1587 kg	3,500 lb
Turning Radius over Tires	4.3 m	14 ft
Drawbar Pull (Loaded)	106.8 kN	24,000 lb

Hydraulic System

Variable displacement load sensing axial piston pump		
System Operating Pressure	252 bar	3,650 psi
Auxiliary Hydraulic Pressure	207 bar	3,000 psi
Auxiliary Hydraulic Flow at Boom Head	57 L/min	15 gal/min

- Auxiliary Hydraulic Circuit used for all attachments equipped with cylinders or other hydraulic components. Consists of valves, controls, and hydraulic lines.

Service Refill Capacities

Fuel Tank	144 L	38 gal
Hydraulic System	238 L	63 gal

Tires

Standard	400/75-28 Duraforce MT
Optional	17.5 x 25 Foam Filled 400/75-28 Foam Filled 17.5 x 25 12 PR

Transmission Speeds

Forward	4 speed
Reverse	3 speed

Boom Performance

Boom Up	16 Seconds
Boom Down	14.8 Seconds
Tele In	13.4 Seconds
Tele Out	17.2 Seconds

Axles

- Trunnion mounted planetary 55 degree steer axles.
- Integral steer cylinder.
- High bias limited slip differential on front axle.

Brakes

- Service Brakes are inboard wet disc brakes on front and rear axles.
- Parking Brakes are mechanical on front axle.
Light on dash indicates when brake is on.

Work Tools

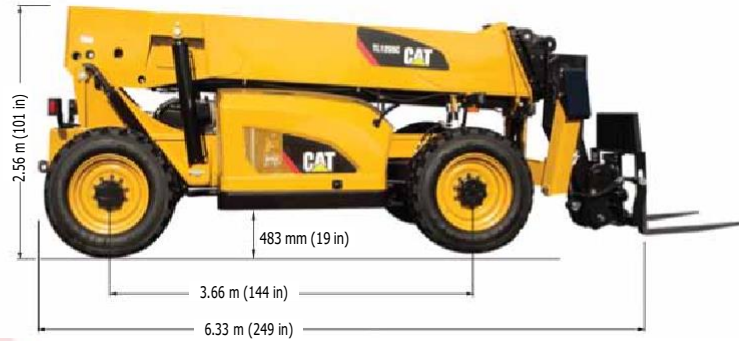
Hydraulic IT Coupler Pallet Forks	Includes Auxiliary Electrics (2) 1525 mm, 60 mm x 150 mm (2) 1220 mm, 60 mm x 125 mm	Includes Auxiliary Electrics (2) 60 in, 2.36 in x 6 in (2) 48 in, 2.36 in x 5 in
Lumber Forks	(2) 1829 mm, 50 mm x 150 mm	(2) 72 in, 2 in x 6 in
Cubing Forks	(2) 1220 mm, 50 mm x 50 mm	(2) 48 in, 2 in x 2 in
Carriages:		
Standard Tilt	1270 mm	50 in
Wide Tilt	1829 mm	72 in
Side Shift	1220 mm	48 in
Standard Rotate	1270 mm	50 in
Wide Rotate	1829 mm	72 in
Swing	100°, 1829 mm, 4536 kg Capacity, 2268 kg Swing	100°, 72 in, 10,000 lb Capacity, 5,000 lb Swing
Dual Fork Positioning	1270 mm	50 in



TL1255C Telehandler

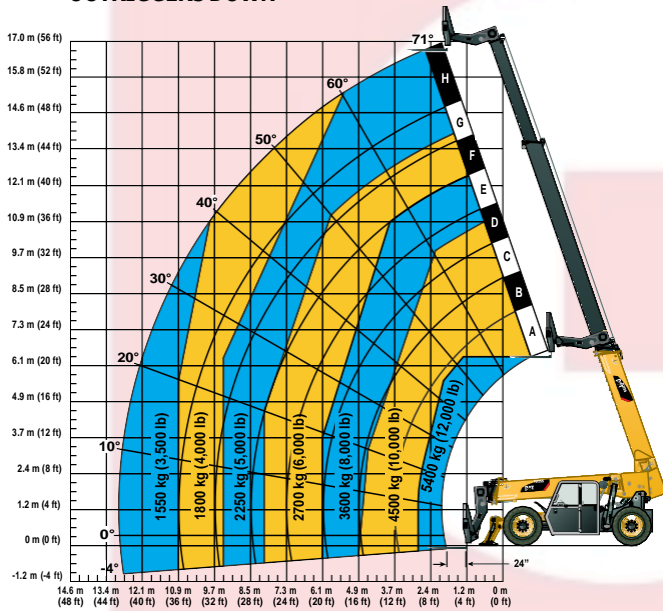
Dimensions

All dimensions are approximate.

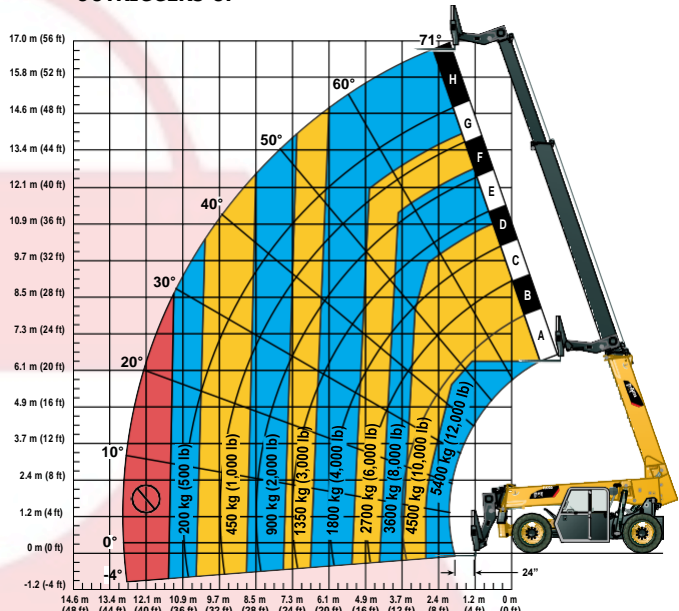


Load Chart and Dimensions

OUTRIGGERS DOWN



OUTRIGGERS UP



IMPORTANT

Rated lift capacities shown are with machine equipped with carriage and pallet forks. The machine must be level on a firm surface with undamaged, properly inflated tires. Machine specifications and

stability are based on rated lift capacities at specific boom angles and boom lengths.

(If specifications are critical, the proposed application should be discussed with your dealer.)

DO NOT exceed rated lift capacity loads, as unstable and dangerous machine conditions will result.

DO NOT tip the machine forward to determine the allowable load.

Use only approved attachments with proper material handler model/attachment load capacity charts displayed

in the operator's cab. OSHA requires all rough terrain forklift operators be trained according to OSHA 29 CFR 1910.178 (1).

Due to continuous product improvements, machine specifications and/or equipment

changes may be made without prior notification. This machine meets or exceeds ANSI/ITSDF B56.6-2005 as originally manufactured for intended applications.

For more complete information on Cat products, dealer services, and industry solutions, visit us on the web at www.cat.com

AEHQ6647(1-2012)

©2012 Caterpillar
All rights reserved.
Printed in U.S.A.

Materials and specifications are subject to change without notice. Featured machines in photos may include additional equipment. See your Cat dealer for available options.

CAT, CATERPILLAR, SAFETY.CAT.COM, their respective logos, "Caterpillar Yellow" and the POWER EDGE trade dress, as well as corporate and product identity used herein, are trademarks of Caterpillar and may not be used without permission.

